
*2021 Kentucky Annual
Administrative Claims Data Report -
Inpatient Hospitalizations*

*January 1 through December 31, 2021
Published June 2022*



KENTUCKY
CABINET FOR HEALTH
AND FAMILY SERVICES

Office of Health Data and Analytics
Division of Analytics

**2021 ANNUAL ADMINISTRATIVE CLAIMS DATA REPORT – INPATIENT
HOSPITALIZATIONS TABLE OF CONTENTS**

INTRODUCTION	Page 1
SECTION I: Map of Kentucky Hospitals with Inpatient Discharges	Page 2
SECTION II: Five Year Trending Charts: 2017 - 2021	Page 3 - 6
CHART 1: Inpatient Hospital Discharges by Year and Patient ADD	
CHART 2: Primary Payor, Kentucky Hospital Inpatient Days	
CHART 3: Inpatient Hospital Discharges by Year and Primary Payor	
CHART 4: Average Length of Stay (days) by Year and Primary Payor	
SECTION III: Inpatient Hospitalization Days by Facility and Payor	Page 7 - 14
TABLE 1: Inpatient Hospitalization Days by Facility and Payor	
SECTION IV: Inpatient Hospitalizations – Leading Twenty-Five MS-DRGs	Page 15 - 30
TABLE 2.00: Inpatient Hospital Discharges – Leading Twenty-Five MS DRGs (Kentucky)	
TABLE 2.01 – TABLE 2.15: Inpatient Hospital Discharges – Leading Twenty-Five MS-DRGs (Hospital ADD)	
SECTION V: Inpatient Hospitalizations – Summary of Categories by Quarter	Page 31 - 46
TABLE 3.00: Summary of Categories by Quarter (Kentucky)	
TABLE 3.01 – TABLE 3.15: Summary of Categories by Quarter (Hospital ADD)	

2021 Annual Administrative Claims Data Report – Inpatient Hospitalizations

INTRODUCTION

Thank you for your interest in the **2021 Annual Administrative Claims Data Report – Inpatient Hospitalizations**. This report covers the inpatient hospital discharges from licensed Kentucky hospitals for the calendar year January 1 through December 31, 2021. The inpatient hospitalization records data submitted by hospitals as required by 900 KAR 7:030 – Data Reporting by Health Care Providers, was used to produce the utilization information in this report.

The report is divided into five sections:

- ◆ **Section I – Map of Kentucky Hospitals with Inpatient Discharges**
- ◆ **Section II – Five Year Trending Charts: 2017 – 2021**
- ◆ **Section III – Inpatient Hospitalization Days by Facility and Payor**
- ◆ **Section IV – Inpatient Hospitalizations – Leading Twenty-Five MS-DRGs**
- ◆ **Section V – Inpatient Hospitalizations – Summary of Categories by Quarter and Hospital ADD**

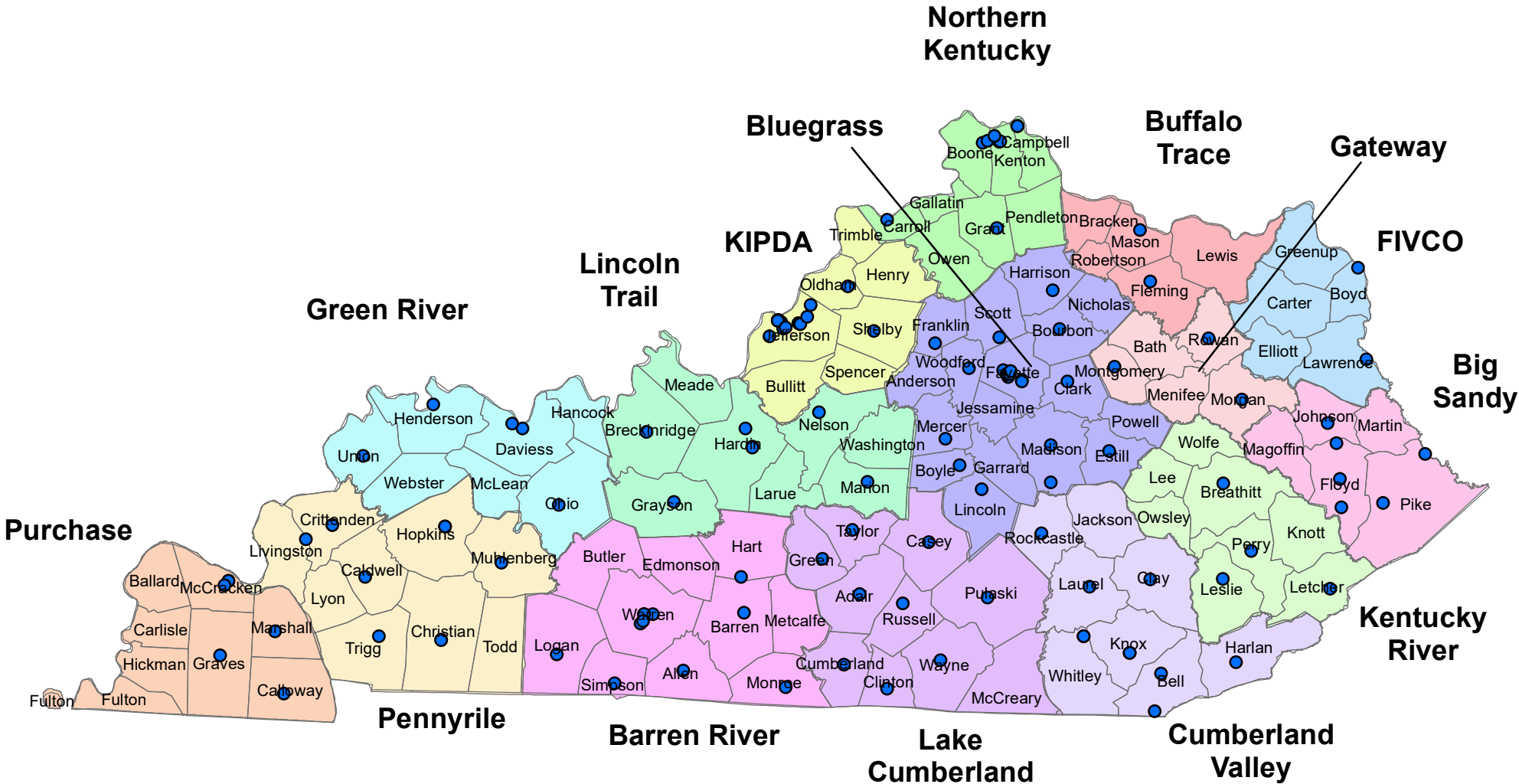
Questions or comments regarding the data contained in this report should be directed to Jamine Hamner at e-mail Jamine.Hamner@ky.gov.

This report is the most recent official data on inpatient hospital services utilization published by the Cabinet for Health and Family Services.

SECTION I

Map of Kentucky Hospitals with Inpatient Discharges

Kentucky Hospitals with Inpatient Discharges



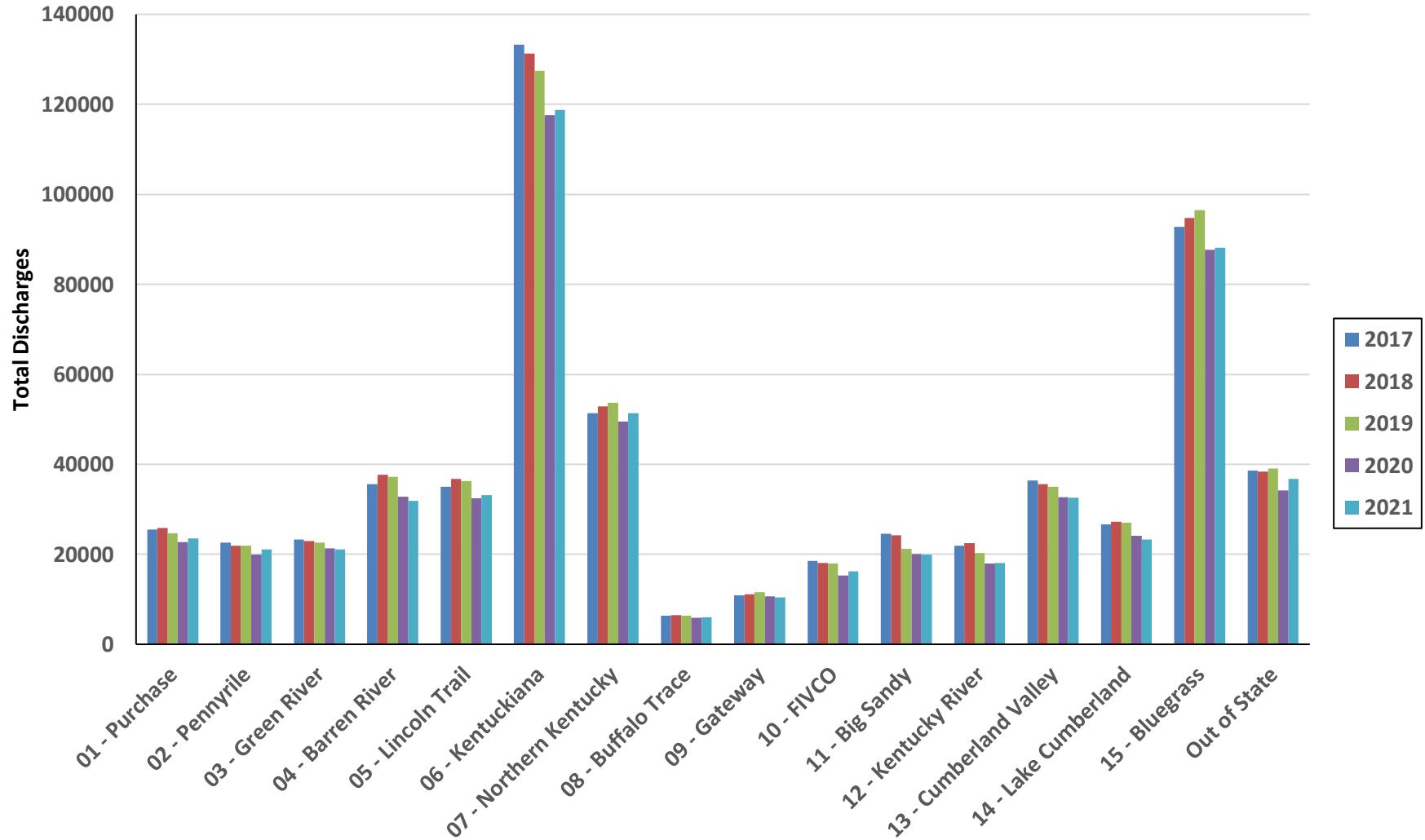
SECTION II

Five Year Trending Charts

2021 ANNUAL ADMINISTRATIVE CLAIMS DATA REPORT - Inpatient Hospitalizations

Chart 1 - Inpatient Hospital Discharges by Year and Patient ADD

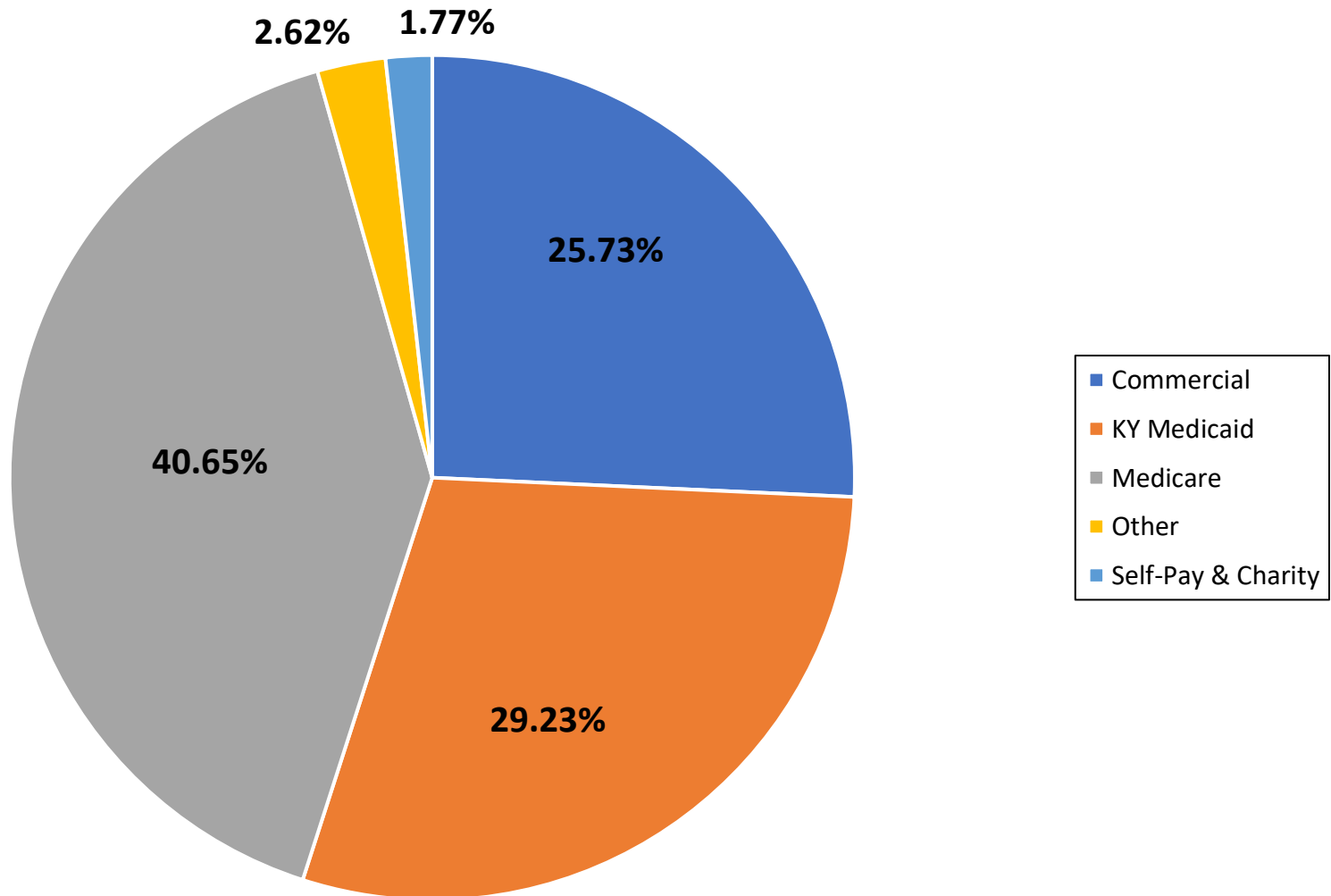
(Source: Kentucky Inpatient Discharge Claims)



2021 ANNUAL ADMINISTRATIVE CLAIMS DATA REPORT - Inpatient Hospitalizations

Chart 2 - Discharges by Primary Payor

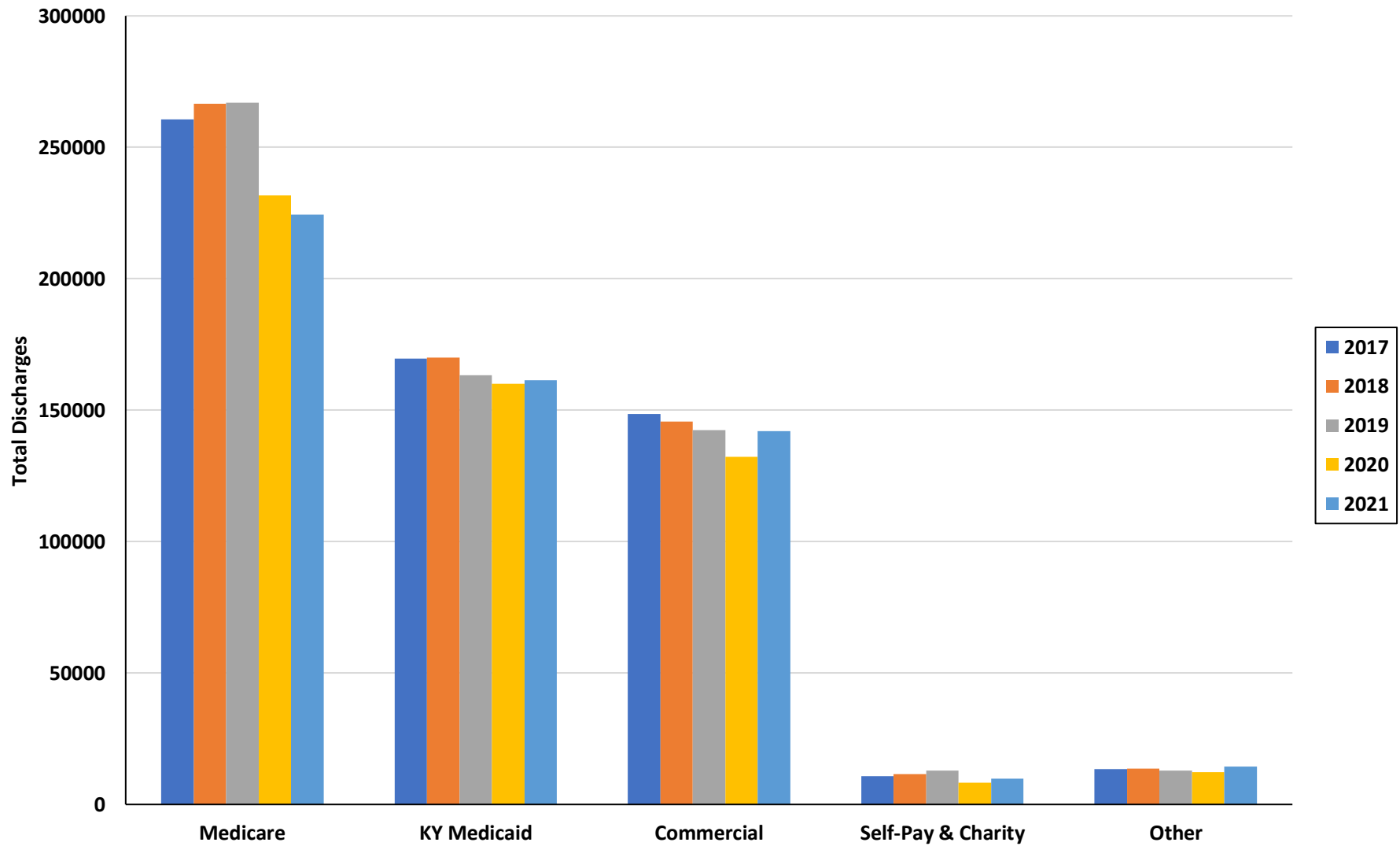
(Source: Kentucky Inpatient Discharge Claims)



2021 ANNUAL ADMINISTRATIVE CLAIMS DATA REPORT - Inpatient Hospitalizations

Chart 3 - Inpatient Hospital Discharges by Year and Primary Payor

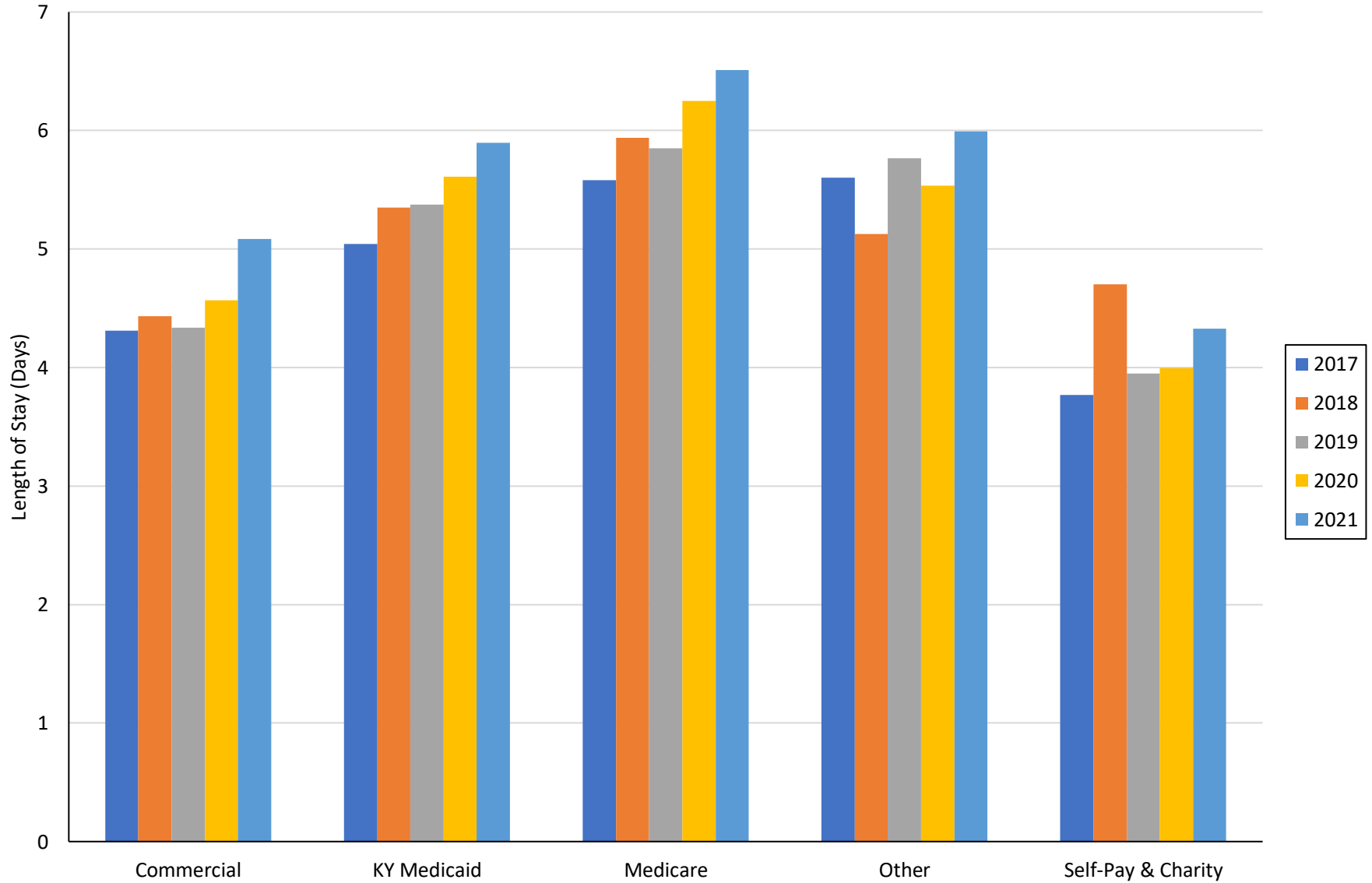
(Source: Kentucky Inpatient Discharge Claims)



2021 ANNUAL ADMINISTRATIVE CLAIMS DATA REPORT - Inpatient Hospitalizations

Chart 4 - Average Length of Stay (days) by Year and Primary Payor

(Source: Kentucky Inpatient Discharge Claims)



SECTION III

Inpatient Hospitalization Days by Facility and Payor

2021 ANNUAL ADMINISTRATIVE CLAIMS DATA REPORT - INPATIENT HOSPITALIZATIONS

Table 1 - Inpatient Hospitalization Days by Facility and Payor

(Source: Kentucky Inpatient Discharge Claims)

ADD	Facility	Medicare		Medicaid		Commercial		Charity / Self-Pay		Other		Total Inpatient Days
		Inpatient Days	% of Total	Inpatient Days	% of Total	Inpatient Days	% of Total	Inpatient Days	% of Total	Inpatient Days	% of Total	
01 - PURCHASE												
	21004901 - Marshall County Hospital	1,248	73.2%	173	10.1%	221	13.0%	13	0.8%	50	2.9%	1,705
	21069501 - Jackson Purchase Medical Center	14,774	67.2%	4,309	19.6%	2,054	9.3%	117	0.5%	722	3.3%	21,976
	21075001 - Murray Calloway County Hospital	6,619	46.8%	2,014	14.2%	5,111	36.2%	197	1.4%	195	1.4%	14,136
	21081001 - Mercy Health Lourdes Hospital	23,975	56.9%	7,156	17.0%	8,101	19.2%	1,211	2.9%	1,725	4.1%	42,168
	21081501 - Baptist Health Paducah	21,755	52.7%	9,153	22.2%	8,420	20.4%	252	0.6%	1,699	4.1%	41,279
	21999909 - ContinueCareHosp at Baptist Hlth PD	3,445	59.1%	1,073	18.4%	1,044	17.9%		0.0%	270	4.6%	5,832
	DPR006 - Mercy Health Lourdes Hosp DP Rehab	4,058	81.8%	229	4.6%	642	12.9%	9	0.2%	22	0.4%	4,960
	DPR008 - Murray Calloway County Hospital DP Rehab	1,036	69.6%	95	6.4%	357	24.0%		0.0%		0.0%	1,488
	SWB007 - Jackson Purchase Medical Ctr Swing Bed	1,221	97.7%	29	2.3%		0.0%		0.0%		0.0%	1,250
	SWB011 - Marshall County Hospital Swing Bed	252	100.0%		0.0%		0.0%		0.0%		0.0%	252
	Total	78,383	58.0%	24,231	17.9%	25,950	19.2%	1,799	1.3%	4,683	3.5%	135,046
02 - PENNYRILE												
	21000201 - Cumberland Hall Behavioral Health Hosp	1,481	7.8%	8,253	43.7%	1,560	8.3%	434	2.3%	7,147	37.9%	18,875
	21007301 - Trigg County Hospital Inc	2,107	68.8%	391	12.8%	556	18.2%	7	0.2%			3,061
	21026001 - Owensboro Health Muhlenberg CH	3,575	74.6%	706	14.7%	361	7.5%	44	0.9%	104	2.2%	4,790
	21033001 - Jennie Stuart Medical Center	10,955	53.3%	5,296	25.8%	2,913	14.2%	285	1.4%	1,110	5.4%	20,559
	21067001 - Baptist Health Madisonville	17,455	53.1%	9,506	28.9%	4,421	13.4%	317	1.0%	1,191	3.6%	32,890
	21068001 - Crittenden Community Hospital	814	54.4%	270	18.0%	390	26.1%	21	1.4%	1	0.1%	1,496
	21087401 - Caldwell Medical Center	358	69.5%	49	9.5%	95	18.4%	13	2.5%			515
	21907001 - Livingston Hospital and Healthcare Svs	1,117	68.3%	122	7.5%	297	18.2%	8	0.5%	91	5.6%	1,635
	21999910 - ContinueCareHosp at Baptist Hlth MV	2,805	55.5%	1,515	30.0%	566	11.2%		0.0%	164	3.2%	5,050
	SNF006 - Owensboro Health Muhlenberg SNF	2,149	15.6%	11,046	80.3%	20	0.1%	538	3.9%		0.0%	13,753
	SWB010 - Livingston Hosp and HC Svs Swing Bed	749	92.0%		0.0%	65	8.0%		0.0%		0.0%	814
	SWB027 - Caldwell Medical Center Swing Bed	1,183	88.2%	76	5.7%	83	6.2%		0.0%		0.0%	1,342
	SWB035 - Crittenden Swing Bed	723	74.9%		0.0%	242	25.1%		0.0%		0.0%	965
	Total	45,471	43.0%	37,230	35.2%	11,569	10.9%	1,667	1.6%	9,808	9.3%	105,745

2021 ANNUAL ADMINISTRATIVE CLAIMS DATA REPORT - INPATIENT HOSPITALIZATIONS

Table 1 - Inpatient Hospitalization Days by Facility and Payor

(Source: Kentucky Inpatient Discharge Claims)

ADD	Facility	Medicare		Medicaid		Commercial		Charity / Self-Pay		Other		Total Inpatient Days
		Inpatient Days	% of Total	Inpatient Days	% of Total	Inpatient Days	% of Total	Inpatient Days	% of Total	Inpatient Days	% of Total	
03 - GREEN RIVER												
	21000301 - Owensboro Health Regional Hospital	38,195	52.1%	18,077	24.7%	13,554	18.5%	818	1.1%	2,654	3.6%	73,298
	21028301 - Ohio County Hospital	2,062	66.5%	486	15.7%	458	14.8%	55	1.8%	42	1.4%	3,103
	21032001 - Deaconess Henderson Hospital	6,394	49.7%	4,101	31.9%	2,024	15.7%	198	1.5%	138	1.1%	12,855
	21073201 - Deaconess Union County Hospital	801	78.3%	119	11.6%	92	9.0%	10	1.0%	1	0.1%	1,023
	21077501 - River Valley Behavioral Health Hospital		0.0%	8,898	93.7%	591	6.2%	12	0.1%		0.0%	9,501
	DPR009 - Owensboro Health Regional Hosp DP Rehab	3,239	67.6%	551	11.5%	785	16.4%	14	0.3%	201	4.2%	4,790
	SNF005 - Owensboro Health Regional Hospital SNF	5,142	98.2%		0.0%	81	1.5%	3	0.1%	9	0.2%	5,235
	SWB017 - Deaconess Health Union Swing Bed	1,677	81.6%	125	6.1%	252	12.3%		0.0%		0.0%	2,054
	Total	57,510	51.4%	32,357	28.9%	17,837	15.9%	1,110	1.0%	3,045	2.7%	111,859
04 - BARREN RIVER												
	21000501 - Southern Kentucky Rehabilitation Hosp	10,592	64.2%	3,072	18.6%	2,737	16.6%	19	0.1%	84	0.5%	16,504
	21006501 - Tri-Star Greenview Regional Hospital	13,910	62.0%	3,590	16.0%	4,014	17.9%	140	0.6%	791	3.5%	22,445
	21007001 - The Medical Center at Bowling Green	43,963	52.7%	20,868	25.0%	15,308	18.4%	899	1.1%	2,367	2.8%	83,405
	21020301 - The Medical Center at Franklin	701	69.8%	94	9.4%	142	14.1%	9	0.9%	58	5.8%	1,004
	21024001 - TJ Samson Community Hospital	11,337	52.6%	5,850	27.2%	2,949	13.7%	1,223	5.7%	182	0.8%	21,541
	21091501 - Logan Memorial Hospital	1,922	73.1%	418	15.9%	256	9.7%	22	0.8%	12	0.5%	2,630
	21091601 - The Medical Center at Scottsville	637	69.0%	103	11.2%	122	13.2%	1	0.1%	60	6.5%	923
	21094701 - Monroe County Medical Center	3,369	74.4%	694	15.3%	421	9.3%	23	0.5%	22	0.5%	4,529
	21888201 - Rivendell Behavioral Health Services	1,158	3.2%	27,245	76.2%	5,183	14.5%	1,829	5.1%	336	0.9%	35,751
	21905501 - The Medical Center at Caverna	199	64.4%	49	15.9%	22	7.1%		0.0%	39	12.6%	309
	21999901 - Commonwealth Regional Specialty Hospital	3,310	65.7%	797	15.8%	877	17.4%		0.0%	57	1.1%	5,041
	SNF014 - TJ Samson SNF	1,876	91.8%	56	2.7%	107	5.2%	5	0.2%		0.0%	2,044
	SWB012 - Monroe County Medical Center Swing Bed	186	100.0%		0.0%		0.0%		0.0%		0.0%	186
	SWB015 - The Medical Center Franklin Swing Bed	3,545	87.5%	288	7.1%	209	5.2%	11	0.3%		0.0%	4,053
	SWB016 - The Medical Ctr at Scottsville Swing Bed	4,169	78.2%	625	11.7%	459	8.6%	81	1.5%		0.0%	5,334
	SWB025 - The Medical Center at Caverna Swing Bed	1,922	65.8%	965	33.1%	32	1.1%		0.0%		0.0%	2,919
	Total	102,796	49.3%	64,714	31.0%	32,838	15.7%	4,262	2.0%	4,008	1.9%	208,618

2021 ANNUAL ADMINISTRATIVE CLAIMS DATA REPORT - INPATIENT HOSPITALIZATIONS

Table 1 - Inpatient Hospitalization Days by Facility and Payor

(Source: Kentucky Inpatient Discharge Claims)

ADD	Facility	Medicare		Medicaid		Commercial		Charity / Self-Pay		Other		Total Inpatient Days
		Inpatient Days	% of Total	Inpatient Days	% of Total	Inpatient Days	% of Total	Inpatient Days	% of Total	Inpatient Days	% of Total	
05 - LINCOLN TRAIL												
	21000101 - Encompass Health Rehab Hosp of Lakeview	6,726	72.7%	548	5.9%	1,886	20.4%		0.0%	88	1.0%	9,248
	21004801 - Flaget Memorial Hospital	4,093	56.5%	1,765	24.4%	1,190	16.4%	24	0.3%	172	2.4%	7,244
	21016501 - Baptist Health Hardin	32,495	57.4%	11,920	21.1%	9,023	15.9%	690	1.2%	2,443	4.3%	56,571
	21026601 - Breckinridge Memorial Hospital	1,293	72.1%	212	11.8%	278	15.5%	3	0.2%	8	0.4%	1,794
	21040001 - Spring View Hospital	3,512	57.1%	1,570	25.5%	953	15.5%	18	0.3%	93	1.5%	6,146
	21040301 - Twin Lakes Regional Medical Center	4,417	53.4%	2,244	27.1%	1,243	15.0%	146	1.8%	226	2.7%	8,276
	21088001 - Lincoln Trail Behavioral Health System	4,397	15.7%	15,476	55.4%	1,833	6.6%	968	3.5%	5,281	18.9%	27,955
	SNF003 - Baptist Health Hardin SNF	1,810	99.5%		0.0%	9	0.5%		0.0%		0.0%	1,819
	SWB003 - Breckinridge Memorial Hospital Swing Bed	502	98.4%		0.0%	8	1.6%		0.0%		0.0%	510
	SWB026 - Twin Lakes Regional Med Ctr Swing Bed	336	96.3%		0.0%	13	3.7%		0.0%		0.0%	349
	Total	59,581	49.7%	33,735	28.1%	16,436	13.7%	1,849	1.5%	8,311	6.9%	119,912
06 - KIPDA												
	21002001 - The Brook Hospital - KMI	1,910	7.2%	16,396	62.1%	7,082	26.8%	557	2.1%	441	1.7%	26,386
	21036501 - Baptist Health Louisville	70,770	58.1%	16,860	13.8%	31,782	26.1%	509	0.4%	1,951	1.6%	121,872
	21036801 - The Brook Hospital - Dupont	3,330	19.0%	10,072	57.4%	3,125	17.8%	707	4.0%	315	1.8%	17,549
	21037301 - Baptist Health La Grange	3,277	52.1%	1,492	23.7%	1,470	23.4%	22	0.3%	29	0.5%	6,290
	21051001 - UofL Health-Jewish Hospital	20,795	26.1%	13,887	17.4%	40,840	51.3%	593	0.7%	3,483	4.4%	79,598
	21055001 - University of Louisville Hospital	20,084	18.2%	32,568	29.5%	51,678	46.9%	1,560	1.4%	4,344	3.9%	110,234
	21058501 - UofL Health-Peace Hospital	4,688	7.5%	37,874	60.2%	19,348	30.8%	564	0.9%	402	0.6%	62,876
	21059501 - UofL Health-Frazier Institute	7,955	28.7%	5,295	19.1%	13,651	49.3%	12	0.0%	765	2.8%	27,678
	21060001 - Kindred Hospital - Louisville	9,449	39.1%	2,578	10.7%	10,404	43.1%	1,371	5.7%	347	1.4%	24,149
	21061001 - Norton Audubon Hospital	48,253	54.1%	14,656	16.4%	22,668	25.4%	1,912	2.1%	1,775	2.0%	89,264
	21061501 - Norton Womens & Childrens Hosp	20,203	22.5%	24,215	27.0%	41,128	45.8%	2,319	2.6%	1,955	2.2%	89,820
	21062001 - UofL Health-Mary & Elizabeth Hospital	8,177	27.5%	6,699	22.5%	14,091	47.4%	431	1.4%	352	1.2%	29,750
	21092001 - UofL Health-Shelbyville Hospital	779	30.7%	305	12.0%	1,377	54.2%	53	2.1%	27	1.1%	2,541
	21888501 - Norton Childrens Hospital	59	0.1%	40,259	60.3%	23,476	35.2%	1,616	2.4%	1,318	2.0%	66,728
	21888601 - Norton Hospital	34,070	35.3%	31,584	32.8%	27,225	28.2%	1,674	1.7%	1,883	2.0%	96,436
	21999101 - Kindred Hospital at Jewish Louisville	3,455	37.8%	747	8.2%	4,791	52.5%		0.0%	138	1.5%	9,131
	21999701 - Norton Brownsboro Hospital	23,019	49.7%	5,551	12.0%	15,693	33.9%	847	1.8%	1,195	2.6%	46,305

2021 ANNUAL ADMINISTRATIVE CLAIMS DATA REPORT - INPATIENT HOSPITALIZATIONS

Table 1 - Inpatient Hospitalization Days by Facility and Payor

(Source: Kentucky Inpatient Discharge Claims)

ADD	Facility	Medicare		Medicaid		Commercial		Charity / Self-Pay		Other		Total Inpatient Days
		Inpatient Days	% of Total	Inpatient Days	% of Total	Inpatient Days	% of Total	Inpatient Days	% of Total	Inpatient Days	% of Total	
06 - KIPDA (Continued)												
	DPR002 - Baptist Health Louisville DP Rehab	3,707	71.4%	600	11.6%	876	16.9%		0.0%	8	0.2%	5,191
	SNF001 - Baptist Health LaGrange SNF	1,203	98.7%		0.0%	16	1.3%		0.0%		0.0%	1,219
	Total	285,183	31.2%	261,638	28.7%	330,721	36.2%	14,747	1.6%	20,728	2.3%	913,017
07 - NORTHERN KY												
	21008101 - Carroll County Memorial Hospital	755	59.3%	288	22.6%	154	12.1%	39	3.1%	37	2.9%	1,273
	21012001 - St Elizabeth Florence	23,562	61.0%	6,795	17.6%	6,166	16.0%	780	2.0%	1,328	3.4%	38,631
	21018401 - St Elizabeth Fort Thomas	19,591	63.7%	5,544	18.0%	4,299	14.0%	419	1.4%	899	2.9%	30,752
	21024501 - Encompass Northern Kentucky Rehab Hosp	13,199	74.4%	2,402	13.5%	2,083	11.7%	7	0.0%	47	0.3%	17,738
	21096901 - St Elizabeth Grant	121	66.5%	36	19.8%	14	7.7%	4	2.2%	7	3.8%	182
	21888701 - St Elizabeth Edgewood	77,441	53.3%	30,727	21.2%	31,311	21.6%	2,381	1.6%	3,326	2.3%	145,186
	21889001 - Gateway Rehabilitation Hosp at Florence	9,472	68.5%	1,684	12.2%	2,612	18.9%	8	0.1%	43	0.3%	13,819
	21999902 - Select Specialty Hospital N Kentucky	2,667	42.8%	2,507	40.2%	1,007	16.2%		0.0%	53	0.9%	6,234
	21999913 - SUN Behavioral Health N KY	3,927	10.5%	26,195	69.8%	6,612	17.6%	344	0.9%	468	1.2%	37,546
	SNF007 - St Elizabeth Fort Thomas SNF	5,133	92.6%		0.0%	350	6.3%	63	1.1%		0.0%	5,546
	SNF008 - St Elizabeth Florence SNF	5,038	94.0%	73	1.4%	184	3.4%	63	1.2%		0.0%	5,358
	SWB032 - St Elizabeth Grant Swing Bed	403	100.0%		0.0%		0.0%		0.0%		0.0%	403
	Total	161,309	53.3%	76,251	25.2%	54,792	18.1%	4,108	1.4%	6,208	2.1%	302,668
08 - BUFFALO TRACE												
	21017201 - Fleming County Hospital	1,725	60.9%	214	7.6%	820	28.9%	57	2.0%	18	0.6%	2,834
	21071001 - Meadowview Regional Medical Center	3,657	50.9%	1,707	23.8%	1,523	21.2%	156	2.2%	144	2.0%	7,187
	Total	5,382	53.7%	1,921	19.2%	2,343	23.4%	213	2.1%	162	1.6%	10,021
09 - GATEWAY												
	21071701 - St Claire Regional Medical Center	13,208	55.1%	6,630	27.6%	3,396	14.2%	645	2.7%	102	0.4%	23,981
	21074001 - Saint Joseph Mount Sterling	5,096	65.6%	1,638	21.1%	912	11.7%	65	0.8%	53	0.7%	7,764
	21096001 - Morgan County ARH Hospital	383	53.6%	107	15.0%	206	28.8%	8	1.1%	11	1.5%	715
	DPR011 - St Claire RMC DP Rehab	1,246	66.8%	353	18.9%	258	13.8%	7	0.4%		0.0%	1,864
	SWB023 - Morgan Co ARH Hospital Swing Bed	490	87.2%		0.0%	72	12.8%		0.0%		0.0%	562
	Total	20,423	58.5%	8,728	25.0%	4,844	13.9%	725	2.1%	166	0.5%	34,886

2021 ANNUAL ADMINISTRATIVE CLAIMS DATA REPORT - INPATIENT HOSPITALIZATIONS

Table 1 - Inpatient Hospitalization Days by Facility and Payor

(Source: Kentucky Inpatient Discharge Claims)

ADD	Facility	Medicare		Medicaid		Commercial		Charity / Self-Pay		Other		Total Inpatient Days
		Inpatient Days	% of Total	Inpatient Days	% of Total	Inpatient Days	% of Total	Inpatient Days	% of Total	Inpatient Days	% of Total	
10 - FIVCO												
	21004001 - Kings Daughters Medical Center	47,002	55.7%	22,240	26.4%	13,342	15.8%	1,253	1.5%	537	0.6%	84,374
	21047701 - Three Rivers Medical Center	5,220	47.0%	4,800	43.2%	913	8.2%	45	0.4%	123	1.1%	11,101
	Total	52,222	54.7%	27,040	28.3%	14,255	14.9%	1,298	1.4%	660	0.7%	95,475
11 - BIG SANDY												
	21068501 - ARH Our Lady of the Way Hospital	731	60.9%	292	24.3%	149	12.4%	1	0.1%	28	2.3%	1,201
	21071201 - McDowell ARH Hospital	838	60.8%	253	18.3%	160	11.6%		0.0%	128	9.3%	1,379
	21083001 - Paul B Hall Regional Medical Center	4,293	60.3%	2,092	29.4%	532	7.5%	36	0.5%	165	2.3%	7,118
	21086001 - Pikeville Medical Center	36,066	53.6%	18,267	27.2%	9,487	14.1%	566	0.8%	2,876	4.3%	67,262
	21087301 - Highlands ARH Reg Med Cent	12,202	48.2%	8,539	33.7%	3,497	13.8%	196	0.8%	878	3.5%	25,312
	21093501 - Tug Valley ARH Regional Medical Center	5,526	59.5%	2,314	24.9%	1,003	10.8%	97	1.0%	340	3.7%	9,280
	DPR010 - Pikeville Medical Center DP Rehab	3,765	70.6%	599	11.2%	726	13.6%		0.0%	241	4.5%	5,331
	SNF011 - Tug Valley ARH Regional Medical Ctr SNF	3,231	70.2%	877	19.1%	179	3.9%		0.0%	313	6.8%	4,600
	SWB019 - ARH Our Lady of the Way Swing Bed	1,777	76.0%	330	14.1%	226	9.7%		0.0%	4	0.2%	2,337
	SWB020 - McDowell ARH Hospital Swing Bed	967	55.2%	457	26.1%	290	16.5%		0.0%	39	2.2%	1,753
	Total	69,396	55.3%	34,020	27.1%	16,249	12.9%	896	0.7%	5,012	4.0%	125,573
12 - KY RIVER												
	21000601 - Kentucky River Medical Center	3,690	59.7%	1,609	26.0%	803	13.0%	38	0.6%	39	0.6%	6,179
	21028701 - Hazard ARH Regional Medical Center	28,914	48.4%	19,687	33.0%	8,711	14.6%	121	0.2%	2,289	3.8%	59,722
	21035001 - Mary Breckinridge ARH Hospital	2,724	60.1%	881	19.5%	781	17.2%		0.0%	143	3.2%	4,529
	21096701 - Whitesburg ARH Hospital	6,893	46.9%	4,413	30.0%	2,328	15.8%	57	0.4%	1,018	6.9%	14,709
	DPR004 - Hazard ARH Regional Medical Ctr DP Rehab	1,979	57.5%	783	22.7%	499	14.5%		0.0%	181	5.3%	3,442
	SWB021 - Whitesburg ARH Hospital Swing Bed	10	27.8%	26	72.2%		0.0%		0.0%		0.0%	36
	Total	44,210	49.9%	27,399	30.9%	13,122	14.8%	216	0.2%	3,670	4.1%	88,617

2021 ANNUAL ADMINISTRATIVE CLAIMS DATA REPORT - INPATIENT HOSPITALIZATIONS

Table 1 - Inpatient Hospitalization Days by Facility and Payor

(Source: Kentucky Inpatient Discharge Claims)

ADD	Facility	Medicare		Medicaid		Commercial		Charity / Self-Pay		Other		Total Inpatient Days
		Inpatient Days	% of Total	Inpatient Days	% of Total	Inpatient Days	% of Total	Inpatient Days	% of Total	Inpatient Days	% of Total	
13 - CUMBERLAND VALLEY												
	21004401 - Barbourville ARH Hospital	1,789	53.7%	857	25.7%	580	17.4%	10	0.3%	97	2.9%	3,333
	21008801 - Baptist Health Corbin	22,496	48.5%	18,151	39.1%	4,642	10.0%	330	0.7%	807	1.7%	46,426
	21027501 - Harlan ARH Hospital	7,744	44.2%	6,783	38.8%	2,137	12.2%	44	0.3%	796	4.5%	17,504
	21047501 - Saint Joseph Hospital London	18,371	57.9%	8,844	27.9%	3,886	12.3%	116	0.4%	499	1.6%	31,716
	21071501 - Middlesboro ARH Hospital	3,141	43.2%	2,518	34.6%	1,253	17.2%	70	1.0%	291	4.0%	7,273
	21074501 - Rockcastle Regional Hosp and Resp Ctr	3,047	67.7%	788	17.5%	509	11.3%	59	1.3%	98	2.2%	4,501
	21087001 - Pineville Community Healthcare	1,122	52.2%	537	25.0%	476	22.1%	6	0.3%	10	0.5%	2,151
	21906501 - AdventHealth Manchester	4,516	57.4%	2,221	28.2%	398	5.1%	475	6.0%	254	3.2%	7,864
	21999801 - ContinueCare Hosp at Baptist Hlth Corbin	4,337	57.4%	2,898	38.3%	231	3.1%		0.0%	92	1.2%	7,558
	DPR001 - Baptist Health Corbin DP Rehab	3,256	68.7%	1,049	22.1%	265	5.6%		0.0%	168	3.5%	4,738
	SNF012 - Rockcastle Regional Hosp and Res Ctr SNF	32,454	44.2%	40,427	55.0%	465	0.6%		0.0%	110	0.1%	73,456
	SWB001 - Baptist Health Corbin Swing Bed	422	97.9%		0.0%	9	2.1%		0.0%		0.0%	431
	SWB022 - Middlesboro ARH Hospital Swing Bed	327	46.4%	256	36.3%	122	17.3%		0.0%		0.0%	705
	SWB031 - Barbourville ARH Hospital Swing Bed	734	56.5%	348	26.8%	216	16.6%		0.0%		0.0%	1,298
	Total	103,756	49.7%	85,677	41.0%	15,189	7.3%	1,110	0.5%	3,222	1.5%	208,954
14 - LAKE CUMBERLAND												
	21007501 - TJ Health Columbia	1,045	87.9%	102	8.6%	33	2.8%	6	0.5%	3	0.3%	1,189
	21007601 - Taylor Regional Hospital	4,984	58.6%	2,114	24.8%	1,111	13.1%	199	2.3%	104	1.2%	8,512
	21025501 - Jane Todd Crawford Memorial Hospital	248	69.5%	35	9.8%	66	18.5%	2	0.6%	6	1.7%	357
	21070801 - Wayne County Hospital Inc	931	57.9%	274	17.0%	326	20.3%	38	2.4%	40	2.5%	1,609
	21094001 - Lake Cumberland Regional Hospital	23,538	56.6%	12,314	29.6%	3,806	9.2%	311	0.7%	1,588	3.8%	41,557
	21100001 - Russell County Hospital	1,216	72.8%	281	16.8%	99	5.9%	9	0.5%	66	3.9%	1,671
	21710101 - Casey County Hospital	950	89.1%	83	7.8%	24	2.3%	9	0.8%		0.0%	1,066
	21900101 - The Medical Center at Albany	500	41.2%	198	16.3%	477	39.3%	21	1.7%	17	1.4%	1,213

2021 ANNUAL ADMINISTRATIVE CLAIMS DATA REPORT - INPATIENT HOSPITALIZATIONS

Table 1 - Inpatient Hospitalization Days by Facility and Payor

(Source: Kentucky Inpatient Discharge Claims)

ADD	Facility	Medicare		Medicaid		Commercial		Charity / Self-Pay		Other		Total Inpatient Days
		Inpatient Days	% of Total	Inpatient Days	% of Total	Inpatient Days	% of Total	Inpatient Days	% of Total	Inpatient Days	% of Total	
14 - LAKE CUMBERLAND (Continued)												
	21902001 - Cumberland County Hospital	1,914	76.3%	416	16.6%	156	6.2%	6	0.2%	18	0.7%	2,510
	DPR005 - Lake Cumberland Reg Hospital DP Rehab	2,359	67.8%	655	18.8%	278	8.0%		0.0%	189	5.4%	3,481
	SNF004 - Lake Cumberland Regional Hospital SNF	3,122	95.9%		0.0%	107	3.3%		0.0%	26	0.8%	3,255
	SWB004 - Casey County Hospital Swing Bed	1,803	29.4%	3,892	63.5%	432	7.1%		0.0%		0.0%	6,127
	SWB013 - Russell County Hospital Swing Bed	99	100.0%		0.0%		0.0%		0.0%		0.0%	99
	SWB024 - Jane Todd Crawford Hospital Swing Bed	4,106	73.0%	1,416	25.2%	106	1.9%		0.0%		0.0%	5,628
	SWB028 - Wayne County Hospital Inc Swing Bed	962	79.9%	59	4.9%	177	14.7%	6	0.5%		0.0%	1,204
	SWB030 - The Medical Center at Albany Swing Bed	663	64.9%	139	13.6%	219	21.4%		0.0%		0.0%	1,021
	Total	48,440	60.2%	21,978	27.3%	7,417	9.2%	607	0.8%	2,057	2.6%	80,499
15 - BLUEGRASS												
	21000701 - Continuing Care Hospital	2,397	49.0%	1,841	37.7%	650	13.3%		0.0%		0.0%	4,888
	21005001 - Saint Joseph Berea	1,940	62.2%	694	22.2%	408	13.1%	16	0.5%	62	2.0%	3,120
	21013001 - Harrison Memorial Hospital	2,977	53.4%	1,485	26.6%	1,002	18.0%	86	1.5%	29	0.5%	5,579
	21014001 - Ephraim McDowell Reg Medical Center	11,163	34.6%	6,675	20.7%	13,426	41.6%	513	1.6%	487	1.5%	32,264
	21019501 - Frankfort Regional Medical Center	19,769	58.0%	7,017	20.6%	5,623	16.5%	1,053	3.1%	615	1.8%	34,077
	21023001 - Georgetown Community Hospital	3,022	42.6%	1,931	27.2%	1,868	26.3%	95	1.3%	178	2.5%	7,094
	21028001 - Ephraim McDowell James B Haggin Hospital	677	45.6%	168	11.3%	608	40.9%	10	0.7%	22	1.5%	1,485
	21035501 - Mercy Health Marcum & Wallace Hosp	1,363	68.6%	353	17.8%	245	12.3%	14	0.7%	13	0.7%	1,988
	21040501 - Encompass Health Cardinal Hill Reh Hosp	28,452	59.9%	8,221	17.3%	10,263	21.6%	14	0.0%	525	1.1%	47,475
	21040701 - Baptist Health Lexington	54,785	49.9%	23,199	21.2%	30,443	27.8%	349	0.3%	904	0.8%	109,680
	21041501 - Ridge Behavioral Health System	1,307	6.0%	15,179	70.2%	3,893	18.0%	958	4.4%	294	1.4%	21,631
	21042001 - UK Healthcare Good Samaritan Hospital	19,656	39.6%	20,863	42.0%	7,074	14.2%	686	1.4%	1,404	2.8%	49,683
	21043501 - Saint Joseph East	6,141	36.7%	4,800	28.7%	5,271	31.5%	162	1.0%	373	2.2%	16,747
	21044001 - Saint Joseph Hospital	44,118	68.3%	12,049	18.7%	7,691	11.9%	399	0.6%	344	0.5%	64,601
	21045501 - UK Chandler Medical Center	88,586	35.7%	91,877	37.0%	56,822	22.9%	2,758	1.1%	8,428	3.4%	248,471
	21083401 - Bourbon Community Hospital	2,127	20.4%	4,953	47.5%	3,241	31.1%	43	0.4%	59	0.6%	10,423
	21090001 - Baptist Health Richmond	7,827	55.3%	3,945	27.9%	2,080	14.7%	37	0.3%	266	1.9%	14,155

2021 ANNUAL ADMINISTRATIVE CLAIMS DATA REPORT - INPATIENT HOSPITALIZATIONS

Table 1 - Inpatient Hospitalization Days by Facility and Payor

(Source: Kentucky Inpatient Discharge Claims)

ADD	Facility	Medicare		Medicaid		Commercial		Charity / Self-Pay		Other		Total Inpatient Days
		Inpatient Days	% of Total	Inpatient Days	% of Total	Inpatient Days	% of Total	Inpatient Days	% of Total	Inpatient Days	% of Total	
15 - BLUEGRASS (Continued)												
	21093801 - Ephraim McDowell Fort Logan Hospital	465	16.5%	1,290	45.6%	920	32.6%	109	3.9%	42	1.5%	2,826
	21095001 - Bluegrass Community Hospital	384	73.7%	80	15.4%	48	9.2%	9	1.7%		0.0%	521
	21097001 - Clark Regional Medical Center	6,576	46.9%	5,166	36.9%	1,915	13.7%	236	1.7%	118	0.8%	14,011
	54131002 - Select Specialty Hospital Lexington	3,295	49.7%	829	12.5%	1,938	29.2%		0.0%	565	8.5%	6,627
	SNF002 - Clark Regional Medical Center SNF	3,479	68.5%	1,433	28.2%	55	1.1%	113	2.2%		0.0%	5,080
	SNF013 - Encompass Health Cardinal Hill SNF	9,412	90.6%		0.0%	971	9.4%		0.0%		0.0%	10,383
	SWB002 - Bluegrass Community Hospital Swing Bed	2,488	92.7%		0.0%	161	6.0%	16	0.6%	19	0.7%	2,684
	SWB006 - Georgetown Community Hospital Swing Bed	14	100.0%		0.0%		0.0%		0.0%		0.0%	14
	SWB008 - Ephraim McDowell JB Haggin Hos Swing Bed	2,015	45.8%	454	10.3%	1,895	43.1%		0.0%	34	0.8%	4,398
	SWB018 - Saint Joseph Berea Swing Bed	1,185	68.7%	443	25.7%	97	5.6%		0.0%		0.0%	1,725
	SWB029 - Harrison Memorial Hospital Swing Bed	14	100.0%		0.0%		0.0%		0.0%		0.0%	14
	SWB034 - Mercy Health Marcum & Wallace Swing	1,489	75.1%	328	16.5%	139	7.0%	27	1.4%		0.0%	1,983
	Total	327,123	45.2%	215,273	29.7%	158,747	21.9%	7,703	1.1%	14,781	2.0%	723,627
Statewide Total		1,461,185	44.8%	952,192	29.2%	722,309	22.1%	42,310	1.3%	86,521	2.7%	3,264,517

SECTION IV

Inpatient Hospitalizations Leading Twenty-Five MS-DRGs

2021 ANNUAL ADMINISTRATIVE CLAIMS DATA REPORT

Table 2.00 - Inpatient Hospital Discharges - Leading 25 MS DRGs

(Source: Kentucky Inpatient Discharge Claims)

All Kentucky Hospitals

MS DRG	Discharges	% of Total	Avg LOS	Avg Charge	Avg Age
885 - PSYCHOSES	29,635	5.4%	8.12	\$19,343.71	36.96
795 - NORMAL NEWBORN	27,056	4.9%	1.91	\$4,518.96	0.00
871 - SEPTICEMIA W/O MV 96+ HOURS W MCC	26,433	4.8%	6.88	\$60,898.72	66.34
177 - RESPIRATORY INFECTIONS & INFLAMMATIONS W MCC	23,549	4.3%	6.60	\$52,844.59	62.94
807 - VAGINAL DELIVERY W/O STERILIZATION WO/CC/MCC	21,182	3.8%	2.26	\$13,272.61	26.22
291 - HEART FAILURE & SHOCK W MCC	13,240	2.4%	5.46	\$38,347.22	71.45
794 - NEONATE W OTHER SIGNIFICANT PROBLEMS	12,440	2.3%	2.39	\$7,509.58	0.00
897 - ALCOHOL/DRUG ABUSE OR DEPENDENCE W/O REHABILITATION THERAPY W/O MCC	11,065	2.0%	6.45	\$16,760.39	43.08
189 - PULMONARY EDEMA & RESPIRATORY FAILURE	8,700	1.6%	14.25	\$63,989.57	63.35
788 - CESAREAN SECTION WO/STERILIZATION WO/CC/MCC	8,131	1.5%	2.94	\$24,091.23	27.10
806 - VAGINAL DELIVERY W/O STERILIZATION W/CC	6,453	1.2%	2.50	\$14,662.73	26.77
872 - SEPTICEMIA W/O MV 96+ HOURS W/O MCC	6,365	1.2%	4.34	\$30,728.64	59.18
193 - SIMPLE PNEUMONIA & PLEURISY W MCC	6,291	1.1%	5.04	\$38,684.29	68.52
392 - ESOPHAGITIS GASTROENT & MISC DIGEST DISORDERS W/O MCC	5,556	1.0%	3.17	\$22,443.91	58.30
853 - INFECTIOUS & PARASITIC DISEASES W O.R. PROCEDURE W MCC	4,916	0.9%	13.56	\$152,631.87	62.73
247 - PERC CARDIOVASC PROC W DRUG-ELUTING STENT W/O MCC	4,662	0.8%	2.19	\$94,440.20	62.05
683 - RENAL FAILURE W CC	4,411	0.8%	4.09	\$26,715.51	67.38
190 - CHRONIC OBSTRUCTIVE PULMONARY DISEASE W MCC	4,385	0.8%	4.45	\$32,773.79	67.08
787 - CESAREAN SECTION WO/STERILIZATION W/CC	4,227	0.8%	3.45	\$27,398.23	27.77
690 - KIDNEY & URINARY TRACT INFECTIONS W/O MCC	4,217	0.8%	4.08	\$22,644.48	67.56
65 - INTRACRANIAL HEMORRHAGE OR CEREBRAL INFARCTION W CC	4,154	0.8%	4.28	\$42,764.07	69.06
378 - G.I. HEMORRHAGE W CC	3,856	0.7%	3.61	\$33,737.56	70.43
603 - CELLULITIS W/O MCC	3,794	0.7%	3.98	\$22,075.91	56.52
682 - RENAL FAILURE W MCC	3,753	0.7%	6.33	\$44,500.46	70.32
641 - NUTRITIONAL & MISC METABOLIC DISORDERS W/O MCC	3,747	0.7%	3.60	\$22,552.59	63.36
All Others	300,019	54.3%	6.68	\$82,141.44	56.61
Statewide	552,237		6.62	\$82,696.99	56.39

2021 ANNUAL ADMINISTRATIVE CLAIMS DATA REPORT

Table 2.01 - Inpatient Hospital Discharges - Leading 25 MS DRGs

(Source: Kentucky Inpatient Discharge Claims)

HOSPITAL ADD: 01 Purchase

MS DRG	Discharges	% of Total	Avg LOS	Avg Charge	Avg Age
795 - NORMAL NEWBORN	1,693	5.7%	1.88	\$4,815.98	0.00
177 - RESPIRATORY INFECTIONS & INFLAMMATIONS W MCC	1,469	4.9%	6.21	\$50,486.60	63.80
885 - PSYCHOSES	1,293	4.3%	6.14	\$24,811.86	45.14
807 - VAGINAL DELIVERY W/O STERILIZATION WO/CC/MCC	1,197	4.0%	2.17	\$11,518.40	26.42
871 - SEPTICEMIA W/O MV 96+ HOURS W MCC	1,038	3.5%	5.83	\$51,099.26	68.68
291 - HEART FAILURE & SHOCK W MCC	785	2.6%	4.77	\$37,126.46	74.89
788 - CESAREAN SECTION WO/STERILIZATION WO/CC/MCC	549	1.8%	2.60	\$25,778.42	27.46
794 - NEONATE W OTHER SIGNIFICANT PROBLEMS	443	1.5%	2.41	\$9,406.34	0.00
193 - SIMPLE PNEUMONIA & PLEURISY W MCC	438	1.5%	4.90	\$35,535.92	71.32
189 - PULMONARY EDEMA & RESPIRATORY FAILURE	404	1.4%	6.00	\$45,254.58	67.77
470 - MAJOR JOINT REPLACEMENT OR REATTACHMENT OF LOWER EXTREMITY W/O MCC	383	1.3%	2.31	\$61,597.04	69.62
190 - CHRONIC OBSTRUCTIVE PULMONARY DISEASE W MCC	382	1.3%	4.05	\$29,936.14	68.02
392 - ESOPHAGITIS GASTROENT & MISC DIGEST DISORDERS W/O MCC	365	1.2%	3.12	\$25,325.61	61.52
690 - KIDNEY & URINARY TRACT INFECTIONS W/O MCC	318	1.1%	3.47	\$22,698.68	69.45
683 - RENAL FAILURE W CC	313	1.0%	3.50	\$26,166.56	68.31
872 - SEPTICEMIA W/O MV 96+ HOURS W/O MCC	309	1.0%	4.28	\$30,275.20	62.62
641 - NUTRITIONAL & MISC METABOLIC DISORDERS W/O MCC	301	1.0%	3.29	\$23,128.73	66.07
897 - ALCOHOL/DRUG ABUSE OR DEPENDENCE W/O REHABILITATION THERAPY W/O MCC	288	1.0%	2.74	\$14,926.81	44.87
247 - PERC CARDIOVASC PROC W DRUG-ELUTING STENT W/O MCC	286	1.0%	2.01	\$103,516.55	64.03
65 - INTRACRANIAL HEMORRHAGE OR CEREBRAL INFARCTION W CC	280	0.9%	3.87	\$37,845.68	70.16
194 - SIMPLE PNEUMONIA & PLEURISY W CC	263	0.9%	3.95	\$26,320.26	67.90
378 - G.I. HEMORRHAGE W CC	261	0.9%	3.62	\$35,320.76	70.28
309 - CARDIAC ARRHYTHMIA & CONDUCTION DISORDERS W CC	247	0.8%	2.48	\$23,156.75	70.90
806 - VAGINAL DELIVERY W/O STERILIZATION W/CC	245	0.8%	2.30	\$12,532.43	26.20
682 - RENAL FAILURE W MCC	238	0.8%	5.06	\$38,837.81	71.98
All Others	16,063	53.8%	5.09	\$72,729.87	61.49
ADD 01	29,851		5.02	\$71,090.06	61.39

2021 ANNUAL ADMINISTRATIVE CLAIMS DATA REPORT

Table 2.02 - Inpatient Hospital Discharges - Leading 25 MS DRGs

(Source: Kentucky Inpatient Discharge Claims)

HOSPITAL ADD: 02 Pennyrite

MS DRG	Discharges	% of Total	Avg LOS	Avg Charge	Avg Age
885 - PSYCHOSES	1,607	10.1%	10.12	\$21,472.24	30.57
177 - RESPIRATORY INFECTIONS & INFLAMMATIONS W MCC	900	5.7%	6.89	\$51,938.69	62.23
795 - NORMAL NEWBORN	823	5.2%	1.75	\$5,046.84	0.00
871 - SEPTICEMIA W/O MV 96+ HOURS W MCC	670	4.2%	6.32	\$52,316.33	66.11
807 - VAGINAL DELIVERY W/O STERILIZATION WO/CC/MCC	630	4.0%	1.90	\$9,852.14	25.47
897 - ALCOHOL/DRUG ABUSE OR DEPENDENCE W/O REHABILITATION THERAPY W/O MCC	352	2.2%	12.49	\$25,799.91	40.36
291 - HEART FAILURE & SHOCK W MCC	315	2.0%	6.56	\$38,035.79	71.98
690 - KIDNEY & URINARY TRACT INFECTIONS W/O MCC	265	1.7%	6.13	\$20,612.67	74.68
794 - NEONATE W OTHER SIGNIFICANT PROBLEMS	260	1.6%	2.31	\$10,296.67	0.00
193 - SIMPLE PNEUMONIA & PLEURISY W MCC	257	1.6%	5.17	\$34,298.15	70.88
189 - PULMONARY EDEMA & RESPIRATORY FAILURE	236	1.5%	9.12	\$64,158.21	66.20
190 - CHRONIC OBSTRUCTIVE PULMONARY DISEASE W MCC	226	1.4%	5.57	\$31,618.62	68.40
788 - CESAREAN SECTION WO/STERILIZATION WO/CC/MCC	224	1.4%	2.54	\$24,102.45	25.96
872 - SEPTICEMIA W/O MV 96+ HOURS W/O MCC	219	1.4%	5.17	\$31,172.35	63.74
948 - SIGNS & SYMPTOMS W/O MCC	200	1.3%	11.99	\$19,151.83	75.78
194 - SIMPLE PNEUMONIA & PLEURISY W CC	199	1.3%	4.05	\$25,250.27	70.59
641 - NUTRITIONAL & MISC METABOLIC DISORDERS W/O MCC	192	1.2%	4.22	\$21,503.10	68.73
683 - RENAL FAILURE W CC	186	1.2%	4.10	\$25,136.36	68.10
207 - RESPIRATORY SYSTEM DIAGNOSIS W VENTILATOR SUPPORT 96+ HOURS	156	1.0%	19.78	\$201,220.56	62.56
392 - ESOPHAGITIS GASTROENT & MISC DIGEST DISORDERS W/O MCC	149	0.9%	3.74	\$21,116.02	63.46
57 - DEGENERATIVE NERVOUS SYSTEM DISORDERS W/O MCC	139	0.9%	17.95	\$30,633.36	79.25
603 - CELLULITIS W/O MCC	138	0.9%	8.84	\$21,689.23	67.31
638 - DIABETES W CC	135	0.8%	6.79	\$24,104.43	58.39
881 - DEPRESSIVE NEUROSES	130	0.8%	7.32	\$16,189.47	29.80
178 - RESPIRATORY INFECTIONS & INFLAMMATIONS W CC	127	0.8%	5.56	\$40,695.80	72.71
All Others	7,149	45.0%	5.78	\$57,532.58	61.47
ADD 02	15,884		5.83	\$56,420.61	61.20

2021 ANNUAL ADMINISTRATIVE CLAIMS DATA REPORT

Table 2.03 - Inpatient Hospital Discharges - Leading 25 MS DRGs

(Source: Kentucky Inpatient Discharge Claims)

HOSPITAL ADD: 03 Green River

MS DRG	Discharges	% of Total	Avg LOS	Avg Charge	Avg Age
795 - NORMAL NEWBORN	1,312	5.8%	1.81	\$3,685.39	0.00
807 - VAGINAL DELIVERY W/O STERILIZATION WO/CC/MCC	1,134	5.0%	2.14	\$12,301.38	26.34
177 - RESPIRATORY INFECTIONS & INFLAMMATIONS W MCC	974	4.3%	6.40	\$38,563.20	61.72
885 - PSYCHOSES	942	4.1%	7.71	\$12,246.61	24.29
871 - SEPTICEMIA W/O MV 96+ HOURS W MCC	743	3.3%	6.21	\$43,827.41	68.48
291 - HEART FAILURE & SHOCK W MCC	646	2.8%	4.84	\$25,747.29	71.13
794 - NEONATE W OTHER SIGNIFICANT PROBLEMS	616	2.7%	2.49	\$7,156.28	0.00
788 - CESAREAN SECTION WO/STERILIZATION WO/CC/MCC	489	2.1%	3.01	\$20,477.82	27.08
897 - ALCOHOL/DRUG ABUSE OR DEPENDENCE W/O REHABILITATION THERAPY W/O MCC	315	1.4%	3.18	\$11,170.46	41.67
193 - SIMPLE PNEUMONIA & PLEURISY W MCC	297	1.3%	4.63	\$26,051.28	69.77
392 - ESOPHAGITIS GASTROENT & MISC DIGEST DISORDERS W/O MCC	280	1.2%	3.15	\$16,529.56	60.19
189 - PULMONARY EDEMA & RESPIRATORY FAILURE	265	1.2%	4.30	\$23,391.36	65.40
872 - SEPTICEMIA W/O MV 96+ HOURS W/O MCC	241	1.1%	4.51	\$22,677.11	58.63
683 - RENAL FAILURE W CC	224	1.0%	3.93	\$19,241.91	67.69
806 - VAGINAL DELIVERY W/O STERILIZATION W/CC	222	1.0%	2.50	\$13,730.40	26.08
690 - KIDNEY & URINARY TRACT INFECTIONS W/O MCC	220	1.0%	3.98	\$16,207.63	67.04
882 - NEUROSES EXCEPT DEPRESSIVE	219	1.0%	13.84	\$14,151.55	14.66
378 - G.I. HEMORRHAGE W CC	216	0.9%	3.48	\$29,418.44	70.00
948 - SIGNS & SYMPTOMS W/O MCC	213	0.9%	8.31	\$26,745.45	73.98
560 - AFTERCARE MUSCULOSKELETAL SYSTEM & CONNECTIVE TISSUE W CC	193	0.8%	9.76	\$26,693.08	74.72
682 - RENAL FAILURE W MCC	191	0.8%	6.04	\$32,016.39	71.55
208 - RESPIRATORY SYSTEM DIAGNOSIS W VENTILATOR SUPPORT <96 HOURS	184	0.8%	6.59	\$63,917.43	64.07
792 - PREMATURETY W/O MAJOR PROBLEMS	180	0.8%	7.06	\$28,498.09	0.00
638 - DIABETES W CC	180	0.8%	3.58	\$19,660.01	49.64
641 - NUTRITIONAL & MISC METABOLIC DISORDERS W/O MCC	179	0.8%	3.79	\$17,366.73	66.81
All Others	12,094	53.1%	5.27	\$52,146.34	60.50
ADD 03	22,769		4.57	\$31,696.01	50.42

2021 ANNUAL ADMINISTRATIVE CLAIMS DATA REPORT

Table 2.04 - Inpatient Hospital Discharges - Leading 25 MS DRGs

(Source: Kentucky Inpatient Discharge Claims)

HOSPITAL ADD: 04 Barren River

MS DRG	Discharges	% of Total	Avg LOS	Avg Charge	Avg Age
795 - NORMAL NEWBORN	2,490	7.3%	1.89	\$3,917.52	0.00
807 - VAGINAL DELIVERY W/O STERILIZATION WO/CC/MCC	1,907	5.6%	2.04	\$12,169.79	27.02
177 - RESPIRATORY INFECTIONS & INFLAMMATIONS W MCC	1,695	5.0%	6.73	\$41,992.10	63.11
885 - PSYCHOSES	1,217	3.6%	9.66	\$18,492.81	18.48
871 - SEPTICEMIA W/O MV 96+ HOURS W MCC	1,185	3.5%	6.47	\$54,597.28	68.02
897 - ALCOHOL/DRUG ABUSE OR DEPENDENCE W/O REHABILITATION THERAPY W/O MCC	766	2.2%	15.46	\$29,722.73	36.06
291 - HEART FAILURE & SHOCK W MCC	726	2.1%	5.68	\$35,979.20	69.49
788 - CESAREAN SECTION WO/STERILIZATION WO/CC/MCC	717	2.1%	2.54	\$19,858.31	27.29
794 - NEONATE W OTHER SIGNIFICANT PROBLEMS	541	1.6%	2.37	\$6,826.20	0.00
189 - PULMONARY EDEMA & RESPIRATORY FAILURE	446	1.3%	5.78	\$38,137.06	65.57
247 - PERC CARDIOVASC PROC W DRUG-ELUTING STENT W/O MCC	380	1.1%	2.33	\$59,926.52	61.71
193 - SIMPLE PNEUMONIA & PLEURISY W MCC	358	1.0%	5.20	\$38,616.24	68.43
280 - ACUTE MYOCARDIAL INFARCTION DISCHARGED ALIVE W MCC	339	1.0%	5.32	\$42,609.61	69.53
948 - SIGNS & SYMPTOMS W/O MCC	329	1.0%	13.96	\$44,435.28	71.57
392 - ESOPHAGITIS GASTROENT & MISC DIGEST DISORDERS W/O MCC	322	0.9%	3.31	\$25,483.15	59.13
207 - RESPIRATORY SYSTEM DIAGNOSIS W VENTILATOR SUPPORT 96+ HOURS	288	0.8%	22.00	\$183,663.51	61.83
57 - DEGENERATIVE NERVOUS SYSTEM DISORDERS W/O MCC	287	0.8%	16.20	\$53,696.71	69.16
872 - SEPTICEMIA W/O MV 96+ HOURS W/O MCC	287	0.8%	4.98	\$36,092.48	62.49
690 - KIDNEY & URINARY TRACT INFECTIONS W/O MCC	280	0.8%	4.59	\$24,177.46	66.09
378 - G.I. HEMORRHAGE W CC	270	0.8%	3.68	\$31,792.01	71.38
65 - INTRACRANIAL HEMORRHAGE OR CEREBRAL INFARCTION W CC	269	0.8%	4.17	\$33,785.16	68.29
621 - O.R. PROCEDURES FOR OBESITY W/O CC/MCC	265	0.8%	1.12	\$42,068.13	40.72
806 - VAGINAL DELIVERY W/O STERILIZATION W/CC	262	0.8%	2.29	\$13,035.00	27.60
683 - RENAL FAILURE W CC	256	0.7%	4.60	\$29,399.94	67.50
194 - SIMPLE PNEUMONIA & PLEURISY W CC	254	0.7%	4.65	\$25,910.98	69.22
All Others	18,053	52.8%	6.88	\$60,328.09	60.89
ADD 04	34,189		5.97	\$38,474.21	51.70

2021 ANNUAL ADMINISTRATIVE CLAIMS DATA REPORT

Table 2.05 - Inpatient Hospital Discharges - Leading 25 MS DRGs

(Source: Kentucky Inpatient Discharge Claims)

HOSPITAL ADD: 05 Lincoln Trail

MS DRG	Discharges	% of Total	Avg LOS	Avg Charge	Avg Age
885 - PSYCHOSES	1,911	8.7%	8.03	\$15,931.63	33.20
795 - NORMAL NEWBORN	1,436	6.5%	1.86	\$4,154.14	0.00
177 - RESPIRATORY INFECTIONS & INFLAMMATIONS W MCC	1,410	6.4%	6.28	\$39,582.22	62.28
871 - SEPTICEMIA W/O MV 96+ HOURS W MCC	1,345	6.1%	5.87	\$40,503.60	67.52
807 - VAGINAL DELIVERY W/O STERILIZATION WO/CC/MCC	939	4.3%	2.02	\$9,826.51	26.51
291 - HEART FAILURE & SHOCK W MCC	688	3.1%	4.94	\$25,980.09	72.11
897 - ALCOHOL/DRUG ABUSE OR DEPENDENCE W/O REHABILITATION THERAPY W/O MCC	669	3.0%	9.62	\$18,993.80	43.74
794 - NEONATE W OTHER SIGNIFICANT PROBLEMS	542	2.5%	2.24	\$5,521.92	0.00
788 - CESAREAN SECTION WO/STERILIZATION WO/CC/MCC	432	2.0%	2.47	\$19,870.42	26.84
806 - VAGINAL DELIVERY W/O STERILIZATION W/CC	291	1.3%	2.20	\$10,521.97	26.13
193 - SIMPLE PNEUMONIA & PLEURISY W MCC	287	1.3%	4.90	\$27,761.83	69.63
57 - DEGENERATIVE NERVOUS SYSTEM DISORDERS W/O MCC	259	1.2%	10.91	\$30,095.37	72.46
872 - SEPTICEMIA W/O MV 96+ HOURS W/O MCC	258	1.2%	3.90	\$22,113.34	58.90
190 - CHRONIC OBSTRUCTIVE PULMONARY DISEASE W MCC	249	1.1%	4.42	\$20,949.19	66.75
392 - ESOPHAGITIS GASTROENT & MISC DIGEST DISORDERS W/O MCC	226	1.0%	3.23	\$18,483.89	58.90
948 - SIGNS & SYMPTOMS W/O MCC	208	0.9%	8.97	\$21,610.60	76.70
638 - DIABETES W CC	206	0.9%	3.32	\$16,677.97	49.51
683 - RENAL FAILURE W CC	183	0.8%	4.03	\$18,285.97	68.36
378 - G.I. HEMORRHAGE W CC	179	0.8%	3.13	\$22,785.54	72.16
787 - CESAREAN SECTION WO/STERILIZATION W/CC	174	0.8%	2.66	\$23,316.43	26.99
682 - RENAL FAILURE W MCC	173	0.8%	6.73	\$33,870.89	72.27
947 - SIGNS & SYMPTOMS W MCC	170	0.8%	11.05	\$27,502.19	72.89
641 - NUTRITIONAL & MISC METABOLIC DISORDERS W/O MCC	164	0.7%	3.10	\$18,186.06	64.73
280 - ACUTE MYOCARDIAL INFARCTION DISCHARGED ALIVE W MCC	162	0.7%	4.11	\$32,960.81	72.78
208 - RESPIRATORY SYSTEM DIAGNOSIS W VENTILATOR SUPPORT <96 HOURS	153	0.7%	7.54	\$68,822.91	62.22
All Others	9,311	42.3%	5.04	\$42,078.17	60.53
ADD 05	22,025		5.06	\$41,462.73	60.25

2021 ANNUAL ADMINISTRATIVE CLAIMS DATA REPORT

Table 2.06 - Inpatient Hospital Discharges - Leading 25 MS DRGs

(Source: Kentucky Inpatient Discharge Claims)

HOSPITAL ADD: 06 KIPDA

MS DRG	Discharges	% of Total	Avg LOS	Avg Charge	Avg Age
885 - PSYCHOSES	8,901	5.9%	10.20	\$19,295.38	32.00
871 - SEPTICEMIA W/O MV 96+ HOURS W MCC	6,800	4.5%	7.10	\$64,557.04	64.12
795 - NORMAL NEWBORN	6,330	4.2%	2.04	\$4,456.28	0.01
807 - VAGINAL DELIVERY W/O STERILIZATION WO/CC/MCC	4,919	3.3%	2.36	\$12,750.56	28.38
794 - NEONATE W OTHER SIGNIFICANT PROBLEMS	4,662	3.1%	2.47	\$7,265.48	0.00
177 - RESPIRATORY INFECTIONS & INFLAMMATIONS W MCC	4,329	2.9%	6.66	\$54,491.17	60.77
291 - HEART FAILURE & SHOCK W MCC	3,452	2.3%	5.59	\$39,391.99	70.37
897 - ALCOHOL/DRUG ABUSE OR DEPENDENCE W/O REHABILITATION THERAPY W/O MCC	2,684	1.8%	6.60	\$14,239.07	42.02
806 - VAGINAL DELIVERY W/O STERILIZATION W/CC	2,573	1.7%	2.61	\$13,949.13	27.97
189 - PULMONARY EDEMA & RESPIRATORY FAILURE	2,035	1.4%	9.37	\$71,098.63	47.43
788 - CESAREAN SECTION WO/STERILIZATION WO/CC/MCC	1,803	1.2%	3.40	\$25,362.69	29.59
872 - SEPTICEMIA W/O MV 96+ HOURS W/O MCC	1,788	1.2%	4.07	\$29,608.87	55.39
392 - ESOPHAGITIS GASTROENT & MISC DIGEST DISORDERS W/O MCC	1,595	1.1%	3.30	\$22,055.71	47.96
853 - INFECTIOUS & PARASITIC DISEASES W O.R. PROCEDURE W MCC	1,472	1.0%	13.60	\$160,364.04	59.79
787 - CESAREAN SECTION WO/STERILIZATION W/CC	1,420	0.9%	3.98	\$28,851.42	29.10
951 - OTHER FACTORS INFLUENCING HEALTH STATUS	1,306	0.9%	3.08	\$7,443.31	75.79
247 - PERC CARDIOVASC PROC W DRUG-ELUTING STENT W/O MCC	1,278	0.9%	2.33	\$104,782.72	62.92
193 - SIMPLE PNEUMONIA & PLEURISY W MCC	1,129	0.8%	5.30	\$40,202.06	61.10
65 - INTRACRANIAL HEMORRHAGE OR CEREBRAL INFARCTION W CC	1,112	0.7%	4.24	\$51,153.67	68.25
683 - RENAL FAILURE W CC	1,029	0.7%	3.96	\$27,032.21	64.05
378 - G.I. HEMORRHAGE W CC	965	0.6%	3.84	\$36,019.17	68.44
682 - RENAL FAILURE W MCC	930	0.6%	6.64	\$45,973.19	68.38
101 - SEIZURES W/O MCC	913	0.6%	3.13	\$24,140.50	35.39
793 - FULL TERM NEONATE W MAJOR PROBLEMS	907	0.6%	9.81	\$62,427.48	0.00
792 - PREMATUREITY W/O MAJOR PROBLEMS	892	0.6%	7.48	\$31,325.19	0.00
All Others	84,612	56.5%	6.51	\$88,956.12	53.92
ADD 06	149,836		6.48	\$89,231.59	53.58

2021 ANNUAL ADMINISTRATIVE CLAIMS DATA REPORT

Table 2.07 - Inpatient Hospital Discharges - Leading 25 MS DRGs

(Source: Kentucky Inpatient Discharge Claims)

HOSPITAL ADD: 07 Northern Kentucky

MS DRG	Discharges	% of Total	Avg LOS	Avg Charge	Avg Age
885 - PSYCHOSES	3,497	6.4%	6.62	\$14,661.27	28.96
897 - ALCOHOL/DRUG ABUSE OR DEPENDENCE W/O REHABILITATION THERAPY W/O MCC	2,474	4.5%	5.04	\$12,017.48	40.44
795 - NORMAL NEWBORN	2,454	4.5%	1.51	\$4,506.56	0.00
871 - SEPTICEMIA W/O MV 96+ HOURS W MCC	2,208	4.0%	7.47	\$52,312.91	66.77
177 - RESPIRATORY INFECTIONS & INFLAMMATIONS W MCC	2,167	4.0%	6.73	\$40,483.97	64.37
807 - VAGINAL DELIVERY W/O STERILIZATION WO/CC/MCC	1,719	3.1%	1.97	\$12,494.32	27.89
291 - HEART FAILURE & SHOCK W MCC	1,199	2.2%	5.80	\$34,403.70	72.68
794 - NEONATE W OTHER SIGNIFICANT PROBLEMS	1,079	2.0%	1.86	\$7,891.63	0.00
806 - VAGINAL DELIVERY W/O STERILIZATION W/CC	799	1.5%	2.33	\$14,096.16	27.43
189 - PULMONARY EDEMA & RESPIRATORY FAILURE	766	1.4%	5.82	\$42,828.83	67.42
392 - ESOPHAGITIS GASTROENT & MISC DIGEST DISORDERS W/O MCC	710	1.3%	3.06	\$15,133.03	60.30
787 - CESAREAN SECTION WO/STERILIZATION W/CC	690	1.3%	3.17	\$27,906.13	29.16
872 - SEPTICEMIA W/O MV 96+ HOURS W/O MCC	582	1.1%	4.61	\$23,252.21	61.08
57 - DEGENERATIVE NERVOUS SYSTEM DISORDERS W/O MCC	547	1.0%	13.14	\$31,447.56	71.33
190 - CHRONIC OBSTRUCTIVE PULMONARY DISEASE W MCC	542	1.0%	4.83	\$31,746.07	66.42
690 - KIDNEY & URINARY TRACT INFECTIONS W/O MCC	523	1.0%	4.20	\$16,118.60	69.45
788 - CESAREAN SECTION WO/STERILIZATION WO/CC/MCC	522	1.0%	2.74	\$25,233.82	29.73
853 - INFECTIOUS & PARASITIC DISEASES W O.R. PROCEDURE W MCC	506	0.9%	15.00	\$135,471.04	61.65
247 - PERC CARDIOVASC PROC W DRUG-ELUTING STENT W/O MCC	494	0.9%	2.25	\$61,930.86	63.29
641 - NUTRITIONAL & MISC METABOLIC DISORDERS W/O MCC	488	0.9%	3.37	\$17,309.85	65.12
92 - OTHER DISORDERS OF NERVOUS SYSTEM W CC	452	0.8%	10.05	\$26,091.23	70.38
683 - RENAL FAILURE W CC	448	0.8%	4.28	\$20,277.50	68.03
65 - INTRACRANIAL HEMORRHAGE OR CEREBRAL INFARCTION W CC	445	0.8%	4.38	\$25,486.24	69.77
91 - OTHER DISORDERS OF NERVOUS SYSTEM W MCC	427	0.8%	11.78	\$35,856.42	67.79
178 - RESPIRATORY INFECTIONS & INFLAMMATIONS W CC	427	0.8%	6.02	\$25,201.26	70.62
All Others	28,669	52.3%	6.09	\$55,431.72	60.94
ADD 07	54,834		6.05	\$54,413.14	60.63

2021 ANNUAL ADMINISTRATIVE CLAIMS DATA REPORT

Table 2.08 - Inpatient Hospital Discharges - Leading 25 MS DRGs

(Source: Kentucky Inpatient Discharge Claims)

HOSPITAL ADD: 08 Buffalo Trace

MS DRG	Discharges	% of Total	Avg LOS	Avg Charge	Avg Age
795 - NORMAL NEWBORN	277	9.2%	1.61	\$3,813.46	0.00
871 - SEPTICEMIA W/O MV 96+ HOURS W MCC	246	8.2%	3.98	\$41,868.95	68.35
807 - VAGINAL DELIVERY W/O STERILIZATION WO/CC/MCC	196	6.5%	1.82	\$11,342.26	25.51
177 - RESPIRATORY INFECTIONS & INFLAMMATIONS W MCC	173	5.7%	5.57	\$54,663.21	66.75
246 - PERC CARDIOVASC PROC W DRUG-ELUTING STENT W MCC OR 4+ VESSELS/STENTS	122	4.0%	2.21	\$133,848.86	67.66
291 - HEART FAILURE & SHOCK W MCC	102	3.4%	2.90	\$27,539.66	71.95
794 - NEONATE W OTHER SIGNIFICANT PROBLEMS	94	3.1%	1.89	\$5,187.05	0.00
247 - PERC CARDIOVASC PROC W DRUG-ELUTING STENT W/O MCC	90	3.0%	1.51	\$114,958.72	62.99
788 - CESAREAN SECTION WO/STERILIZATION WO/CC/MCC	71	2.4%	2.06	\$31,147.15	26.18
806 - VAGINAL DELIVERY W/O STERILIZATION W/CC	65	2.2%	1.80	\$11,980.43	26.62
872 - SEPTICEMIA W/O MV 96+ HOURS W/O MCC	62	2.1%	2.39	\$24,550.13	58.61
287 - CIRCULATORY DISORDERS EXCEPT AMI W CARD CATH W/O MCC	56	1.9%	1.43	\$53,364.57	61.98
193 - SIMPLE PNEUMONIA & PLEURISY W MCC	52	1.7%	3.62	\$31,837.41	72.77
286 - CIRCULATORY DISORDERS EXCEPT AMI W CARD CATH W MCC	38	1.3%	2.34	\$59,694.11	66.84
603 - CELLULITIS W/O MCC	38	1.3%	3.26	\$23,195.08	57.11
189 - PULMONARY EDEMA & RESPIRATORY FAILURE	36	1.2%	2.94	\$35,867.00	67.69
190 - CHRONIC OBSTRUCTIVE PULMONARY DISEASE W MCC	33	1.1%	2.79	\$28,296.25	67.06
787 - CESAREAN SECTION WO/STERILIZATION W/CC	31	1.0%	2.52	\$33,236.03	25.19
792 - PREMATURITY W/O MAJOR PROBLEMS	30	1.0%	2.33	\$5,181.07	0.00
281 - ACUTE MYOCARDIAL INFARCTION DISCHARGED ALIVE W CC	30	1.0%	1.80	\$50,592.43	67.40
690 - KIDNEY & URINARY TRACT INFECTIONS W/O MCC	27	0.9%	6.33	\$26,263.00	79.48
280 - ACUTE MYOCARDIAL INFARCTION DISCHARGED ALIVE W MCC	24	0.8%	2.88	\$52,710.45	66.04
638 - DIABETES W CC	24	0.8%	7.63	\$43,170.26	44.08
999 - UNGROUPABLE	24	0.8%	3.38	\$71,806.32	81.29
561 - AFTERCARE MUSCULOSKELETAL SYSTEM & CONNECTIVE TISSUE W/O CC/MCC	22	0.7%	13.50	\$35,327.63	79.05
All Others	1,055	35.0%	4.18	\$46,940.52	62.07
ADD 08	3,018		4.09	\$46,482.94	61.17

2021 ANNUAL ADMINISTRATIVE CLAIMS DATA REPORT

Table 2.09 - Inpatient Hospital Discharges - Leading 25 MS DRGs

(Source: Kentucky Inpatient Discharge Claims)

HOSPITAL ADD: 09 Gateway

MS DRG	Discharges	% of Total	Avg LOS	Avg Charge	Avg Age
871 - SEPTICEMIA W/O MV 96+ HOURS W MCC	706	9.5%	6.58	\$43,913.05	65.80
885 - PSYCHOSES	553	7.5%	4.87	\$10,341.60	39.48
177 - RESPIRATORY INFECTIONS & INFLAMMATIONS W MCC	443	6.0%	6.57	\$44,564.64	64.37
795 - NORMAL NEWBORN	369	5.0%	1.79	\$2,681.66	0.00
807 - VAGINAL DELIVERY W/O STERILIZATION WO/CC/MCC	320	4.3%	2.16	\$8,227.86	25.10
291 - HEART FAILURE & SHOCK W MCC	302	4.1%	4.97	\$28,446.00	73.78
193 - SIMPLE PNEUMONIA & PLEURISY W MCC	156	2.1%	4.78	\$27,117.31	69.13
189 - PULMONARY EDEMA & RESPIRATORY FAILURE	149	2.0%	4.28	\$27,908.10	65.17
872 - SEPTICEMIA W/O MV 96+ HOURS W/O MCC	144	1.9%	4.08	\$23,309.60	54.85
794 - NEONATE W OTHER SIGNIFICANT PROBLEMS	128	1.7%	1.90	\$3,060.33	0.00
621 - O.R. PROCEDURES FOR OBESITY W/O CC/MCC	114	1.5%	1.02	\$78,567.91	40.76
788 - CESAREAN SECTION WO/STERILIZATION WO/CC/MCC	105	1.4%	2.34	\$16,092.43	27.56
682 - RENAL FAILURE W MCC	101	1.4%	5.60	\$26,355.17	74.51
683 - RENAL FAILURE W CC	93	1.3%	3.59	\$20,067.94	67.76
853 - INFECTIOUS & PARASITIC DISEASES W O.R. PROCEDURE W MCC	88	1.2%	10.39	\$83,858.56	62.25
247 - PERC CARDIOVASC PROC W DRUG-ELUTING STENT W/O MCC	78	1.1%	1.77	\$73,098.44	61.95
884 - ORGANIC DISTURBANCES & MENTAL RETARDATION	72	1.0%	7.03	\$20,276.60	75.50
378 - G.I. HEMORRHAGE W CC	68	0.9%	3.26	\$24,783.60	68.71
690 - KIDNEY & URINARY TRACT INFECTIONS W/O MCC	64	0.9%	3.14	\$18,443.90	66.88
280 - ACUTE MYOCARDIAL INFARCTION DISCHARGED ALIVE W MCC	63	0.8%	4.41	\$34,291.75	70.60
698 - OTHER KIDNEY & URINARY TRACT DIAGNOSES W MCC	62	0.8%	5.85	\$32,994.72	67.39
897 - ALCOHOL/DRUG ABUSE OR DEPENDENCE W/O REHABILITATION THERAPY W/O MCC	60	0.8%	3.58	\$12,277.09	43.15
194 - SIMPLE PNEUMONIA & PLEURISY W CC	59	0.8%	3.93	\$23,483.71	69.92
638 - DIABETES W CC	56	0.8%	2.39	\$17,305.63	54.91
854 - INFECTIOUS & PARASITIC DISEASES W O.R. PROCEDURE W CC	54	0.7%	5.33	\$42,899.88	53.61
All Others	3,009	40.6%	4.59	\$36,690.26	58.29
ADD 09	7,416		4.57	\$36,314.30	58.11

2021 ANNUAL ADMINISTRATIVE CLAIMS DATA REPORT

Table 2.10 - Inpatient Hospital Discharges - Leading 25 MS DRGs

(Source: Kentucky Inpatient Discharge Claims)

HOSPITAL ADD: 10 FIVCO

MS DRG	Discharges	% of Total	Avg LOS	Avg Charge	Avg Age
885 - PSYCHOSES	1,622	7.7%	5.27	\$16,570.26	39.77
177 - RESPIRATORY INFECTIONS & INFLAMMATIONS W MCC	1,232	5.8%	6.01	\$46,093.06	63.08
871 - SEPTICEMIA W/O MV 96+ HOURS W MCC	790	3.7%	6.00	\$51,675.64	65.28
291 - HEART FAILURE & SHOCK W MCC	741	3.5%	5.06	\$34,024.36	71.03
795 - NORMAL NEWBORN	667	3.2%	2.04	\$3,270.50	0.00
807 - VAGINAL DELIVERY W/O STERILIZATION WO/CC/MCC	576	2.7%	2.45	\$21,117.76	25.89
280 - ACUTE MYOCARDIAL INFARCTION DISCHARGED ALIVE W MCC	491	2.3%	5.05	\$40,412.84	70.08
189 - PULMONARY EDEMA & RESPIRATORY FAILURE	473	2.2%	4.32	\$34,310.20	64.54
897 - ALCOHOL/DRUG ABUSE OR DEPENDENCE W/O REHABILITATION THERAPY W/O MCC	420	2.0%	3.86	\$13,341.23	41.52
193 - SIMPLE PNEUMONIA & PLEURISY W MCC	417	2.0%	4.62	\$36,010.93	68.20
247 - PERC CARDIOVASC PROC W DRUG-ELUTING STENT W/O MCC	280	1.3%	2.00	\$72,488.53	63.69
682 - RENAL FAILURE W MCC	258	1.2%	5.27	\$36,999.34	70.36
683 - RENAL FAILURE W CC	253	1.2%	3.98	\$24,729.56	65.81
603 - CELLULITIS W/O MCC	240	1.1%	3.23	\$21,440.88	56.75
378 - G.I. HEMORRHAGE W CC	234	1.1%	3.15	\$36,098.15	69.74
190 - CHRONIC OBSTRUCTIVE PULMONARY DISEASE W MCC	226	1.1%	4.45	\$37,541.96	66.21
788 - CESAREAN SECTION WO/STERILIZATION WO/CC/MCC	221	1.0%	2.87	\$23,146.12	26.33
794 - NEONATE W OTHER SIGNIFICANT PROBLEMS	208	1.0%	2.53	\$5,205.37	0.00
621 - O.R. PROCEDURES FOR OBESITY W/O CC/MCC	190	0.9%	1.24	\$35,730.53	41.09
208 - RESPIRATORY SYSTEM DIAGNOSIS W VENTILATOR SUPPORT <96 HOURS	187	0.9%	7.29	\$78,909.35	63.52
872 - SEPTICEMIA W/O MV 96+ HOURS W/O MCC	181	0.9%	4.18	\$31,747.24	56.86
689 - KIDNEY & URINARY TRACT INFECTIONS W MCC	175	0.8%	4.39	\$29,247.17	76.25
638 - DIABETES W CC	175	0.8%	3.30	\$24,110.55	54.09
377 - G.I. HEMORRHAGE W MCC	171	0.8%	5.43	\$51,726.90	72.81
853 - INFECTIOUS & PARASITIC DISEASES W O.R. PROCEDURE W MCC	167	0.8%	9.31	\$109,123.54	61.41
All Others	10,574	50.0%	4.54	\$54,775.84	59.89
ADD 10	21,169		4.51	\$53,950.91	59.56

2021 ANNUAL ADMINISTRATIVE CLAIMS DATA REPORT

Table 2.11 - Inpatient Hospital Discharges - Leading 25 MS DRGs

(Source: Kentucky Inpatient Discharge Claims)

HOSPITAL ADD: 11 Big Sandy

MS DRG	Discharges	% of Total	Avg LOS	Avg Charge	Avg Age
871 - SEPTICEMIA W/O MV 96+ HOURS W MCC	1,611	7.8%	6.53	\$78,916.71	64.31
177 - RESPIRATORY INFECTIONS & INFLAMMATIONS W MCC	1,436	7.0%	6.83	\$70,757.42	61.19
795 - NORMAL NEWBORN	734	3.6%	2.05	\$6,005.93	0.00
807 - VAGINAL DELIVERY W/O STERILIZATION WO/CC/MCC	645	3.1%	2.49	\$21,796.83	25.16
885 - PSYCHOSES	600	2.9%	9.20	\$37,162.69	41.58
291 - HEART FAILURE & SHOCK W MCC	552	2.7%	5.65	\$50,713.18	69.79
193 - SIMPLE PNEUMONIA & PLEURISY W MCC	441	2.1%	5.07	\$53,700.51	66.56
794 - NEONATE W OTHER SIGNIFICANT PROBLEMS	367	1.8%	2.28	\$7,611.43	0.00
190 - CHRONIC OBSTRUCTIVE PULMONARY DISEASE W MCC	289	1.4%	4.12	\$41,843.69	68.01
189 - PULMONARY EDEMA & RESPIRATORY FAILURE	269	1.3%	8.60	\$51,297.61	63.83
872 - SEPTICEMIA W/O MV 96+ HOURS W/O MCC	267	1.3%	4.25	\$44,454.83	58.85
208 - RESPIRATORY SYSTEM DIAGNOSIS W VENTILATOR SUPPORT <96 HOURS	267	1.3%	8.82	\$131,029.30	63.94
853 - INFECTIOUS & PARASITIC DISEASES W O.R. PROCEDURE W MCC	256	1.2%	12.47	\$181,708.35	61.24
806 - VAGINAL DELIVERY W/O STERILIZATION W/CC	251	1.2%	2.71	\$26,358.24	25.52
280 - ACUTE MYOCARDIAL INFARCTION DISCHARGED ALIVE W MCC	247	1.2%	6.08	\$69,467.67	68.27
194 - SIMPLE PNEUMONIA & PLEURISY W CC	235	1.1%	3.89	\$41,365.76	66.35
690 - KIDNEY & URINARY TRACT INFECTIONS W/O MCC	208	1.0%	4.47	\$32,623.03	65.86
682 - RENAL FAILURE W MCC	207	1.0%	6.16	\$57,988.47	68.61
207 - RESPIRATORY SYSTEM DIAGNOSIS W VENTILATOR SUPPORT 96+ HOURS	206	1.0%	18.75	\$371,112.65	65.12
788 - CESAREAN SECTION WO/STERILIZATION WO/CC/MCC	203	1.0%	2.57	\$28,045.80	26.25
948 - SIGNS & SYMPTOMS W/O MCC	189	0.9%	11.59	\$50,629.58	69.05
870 - SEPTICEMIA W MV 96+ HOURS	186	0.9%	16.42	\$314,208.30	64.00
603 - CELLULITIS W/O MCC	181	0.9%	3.97	\$33,069.39	52.11
683 - RENAL FAILURE W CC	174	0.8%	4.30	\$34,074.14	66.53
247 - PERC CARDIOVASC PROC W DRUG-ELUTING STENT W/O MCC	174	0.8%	2.41	\$100,200.66	60.55
All Others	10,359	50.4%	5.97	\$80,904.35	57.76
ADD 11	20,554		5.96	\$80,486.68	57.56

2021 ANNUAL ADMINISTRATIVE CLAIMS DATA REPORT

Table 2.12 - Inpatient Hospital Discharges - Leading 25 MS DRGs

(Source: Kentucky Inpatient Discharge Claims)

HOSPITAL ADD: 12 Kentucky River

MS DRG	Discharges	% of Total	Avg LOS	Avg Charge	Avg Age
871 - SEPTICEMIA W/O MV 96+ HOURS W MCC	1,334	9.1%	7.08	\$67,822.28	63.71
885 - PSYCHOSES	769	5.2%	13.62	\$41,258.07	42.31
177 - RESPIRATORY INFECTIONS & INFLAMMATIONS W MCC	762	5.2%	6.60	\$62,007.35	60.80
291 - HEART FAILURE & SHOCK W MCC	415	2.8%	5.48	\$45,362.06	69.02
807 - VAGINAL DELIVERY W/O STERILIZATION WO/CC/MCC	366	2.5%	2.21	\$12,555.20	25.23
193 - SIMPLE PNEUMONIA & PLEURISY W MCC	357	2.4%	5.78	\$51,115.44	66.93
795 - NORMAL NEWBORN	352	2.4%	2.00	\$3,373.80	0.00
190 - CHRONIC OBSTRUCTIVE PULMONARY DISEASE W MCC	282	1.9%	3.94	\$38,142.40	65.37
794 - NEONATE W OTHER SIGNIFICANT PROBLEMS	252	1.7%	2.57	\$4,425.78	0.00
392 - ESOPHAGITIS GASTROENT & MISC DIGEST DISORDERS W/O MCC	252	1.7%	2.75	\$27,322.43	57.87
280 - ACUTE MYOCARDIAL INFARCTION DISCHARGED ALIVE W MCC	231	1.6%	5.93	\$53,850.82	65.63
872 - SEPTICEMIA W/O MV 96+ HOURS W/O MCC	224	1.5%	4.60	\$37,320.21	56.08
853 - INFECTIOUS & PARASITIC DISEASES W O.R. PROCEDURE W MCC	190	1.3%	14.49	\$160,753.46	58.88
189 - PULMONARY EDEMA & RESPIRATORY FAILURE	173	1.2%	4.49	\$49,377.13	61.65
897 - ALCOHOL/DRUG ABUSE OR DEPENDENCE W/O REHABILITATION THERAPY W/O MCC	171	1.2%	3.74	\$18,687.56	42.22
682 - RENAL FAILURE W MCC	168	1.1%	5.98	\$46,356.76	67.93
191 - CHRONIC OBSTRUCTIVE PULMONARY DISEASE W CC	162	1.1%	3.48	\$32,038.53	64.91
208 - RESPIRATORY SYSTEM DIAGNOSIS W VENTILATOR SUPPORT <96 HOURS	161	1.1%	6.58	\$91,038.66	63.04
870 - SEPTICEMIA W MV 96+ HOURS	159	1.1%	16.38	\$204,772.22	63.40
690 - KIDNEY & URINARY TRACT INFECTIONS W/O MCC	150	1.0%	3.79	\$31,147.05	65.03
178 - RESPIRATORY INFECTIONS & INFLAMMATIONS W CC	149	1.0%	4.11	\$39,701.79	62.62
683 - RENAL FAILURE W CC	148	1.0%	3.58	\$31,551.54	66.83
788 - CESAREAN SECTION WO/STERILIZATION WO/CC/MCC	145	1.0%	2.61	\$24,290.36	24.99
638 - DIABETES W CC	143	1.0%	3.14	\$26,427.80	53.09
603 - CELLULITIS W/O MCC	142	1.0%	3.11	\$25,163.14	50.56
All Others	7,078	48.0%	5.70	\$63,344.43	57.33
ADD 12	14,735		5.70	\$62,717.82	57.14

2021 ANNUAL ADMINISTRATIVE CLAIMS DATA REPORT

Table 2.13 - Inpatient Hospital Discharges - Leading 25 MS DRGs

(Source: Kentucky Inpatient Discharge Claims)

HOSPITAL ADD: 13 Cumberland Valley

MS DRG	Discharges	% of Total	Avg LOS	Avg Charge	Avg Age
871 - SEPTICEMIA W/O MV 96+ HOURS W MCC	2,633	9.8%	6.93	\$60,058.18	65.26
885 - PSYCHOSES	1,864	7.0%	6.66	\$23,276.15	36.79
189 - PULMONARY EDEMA & RESPIRATORY FAILURE	1,702	6.4%	44.70	\$111,482.94	56.24
177 - RESPIRATORY INFECTIONS & INFLAMMATIONS W MCC	1,427	5.3%	6.53	\$50,582.76	63.19
795 - NORMAL NEWBORN	1,334	5.0%	1.81	\$5,015.40	0.00
807 - VAGINAL DELIVERY W/O STERILIZATION WO/CC/MCC	1,175	4.4%	2.27	\$11,347.09	25.37
291 - HEART FAILURE & SHOCK W MCC	708	2.6%	5.32	\$38,921.13	69.38
897 - ALCOHOL/DRUG ABUSE OR DEPENDENCE W/O REHABILITATION THERAPY W/O MCC	658	2.5%	4.41	\$15,345.24	42.88
794 - NEONATE W OTHER SIGNIFICANT PROBLEMS	609	2.3%	2.48	\$7,964.60	0.00
872 - SEPTICEMIA W/O MV 96+ HOURS W/O MCC	552	2.1%	4.43	\$30,596.10	57.86
788 - CESAREAN SECTION WO/STERILIZATION WO/CC/MCC	482	1.8%	2.30	\$21,841.94	26.65
193 - SIMPLE PNEUMONIA & PLEURISY W MCC	340	1.3%	4.48	\$34,822.06	67.71
853 - INFECTIOUS & PARASITIC DISEASES W O.R. PROCEDURE W MCC	316	1.2%	11.50	\$111,346.17	62.42
793 - FULL TERM NEONATE W MAJOR PROBLEMS	271	1.0%	5.28	\$24,553.82	0.00
806 - VAGINAL DELIVERY W/O STERILIZATION W/CC	258	1.0%	2.30	\$11,366.77	26.51
208 - RESPIRATORY SYSTEM DIAGNOSIS W VENTILATOR SUPPORT <96 HOURS	238	0.9%	7.95	\$74,152.28	64.69
787 - CESAREAN SECTION WO/STERILIZATION W/CC	219	0.8%	2.47	\$23,804.25	27.40
683 - RENAL FAILURE W CC	219	0.8%	4.12	\$30,438.21	65.23
190 - CHRONIC OBSTRUCTIVE PULMONARY DISEASE W MCC	212	0.8%	4.21	\$32,676.77	66.65
392 - ESOPHAGITIS GASTROENT & MISC DIGEST DISORDERS W/O MCC	209	0.8%	2.78	\$20,306.55	58.18
870 - SEPTICEMIA W MV 96+ HOURS	208	0.8%	18.43	\$213,828.71	64.70
638 - DIABETES W CC	205	0.8%	4.05	\$25,084.90	50.17
789 - NEONATES DIED OR TRANSFERRED TO ANOTHER ACUTE CARE FACILITY	205	0.8%	1.84	\$11,375.84	0.00
682 - RENAL FAILURE W MCC	204	0.8%	5.60	\$41,371.79	70.80
207 - RESPIRATORY SYSTEM DIAGNOSIS W VENTILATOR SUPPORT 96+ HOURS	197	0.7%	23.19	\$214,338.99	63.52
All Others	10,319	38.6%	5.71	\$52,002.31	58.51
ADD 13	26,764		5.79	\$51,967.82	57.93

2021 ANNUAL ADMINISTRATIVE CLAIMS DATA REPORT

Table 2.14 - Inpatient Hospital Discharges - Leading 25 MS DRGs

(Source: Kentucky Inpatient Discharge Claims)

HOSPITAL ADD: 14 Lake Cumberland

MS DRG	Discharges	% of Total	Avg LOS	Avg Charge	Avg Age
795 - NORMAL NEWBORN	942	7.1%	2.08	\$5,862.60	0.00
177 - RESPIRATORY INFECTIONS & INFLAMMATIONS W MCC	708	5.3%	7.13	\$67,538.89	64.81
807 - VAGINAL DELIVERY W/O STERILIZATION WO/CC/MCC	636	4.8%	2.30	\$15,581.37	25.46
885 - PSYCHOSES	590	4.4%	5.21	\$29,482.13	44.31
291 - HEART FAILURE & SHOCK W MCC	321	2.4%	5.39	\$47,305.28	72.83
194 - SIMPLE PNEUMONIA & PLEURISY W CC	275	2.1%	4.31	\$32,733.88	70.88
788 - CESAREAN SECTION WO/STERILIZATION WO/CC/MCC	272	2.0%	2.34	\$25,892.45	26.16
871 - SEPTICEMIA W/O MV 96+ HOURS W MCC	261	2.0%	6.01	\$87,451.13	68.17
794 - NEONATE W OTHER SIGNIFICANT PROBLEMS	215	1.6%	2.46	\$8,451.14	0.00
690 - KIDNEY & URINARY TRACT INFECTIONS W/O MCC	204	1.5%	4.19	\$25,268.79	69.61
193 - SIMPLE PNEUMONIA & PLEURISY W MCC	195	1.5%	5.34	\$56,909.41	69.46
948 - SIGNS & SYMPTOMS W/O MCC	194	1.5%	21.41	\$62,940.98	73.77
247 - PERC CARDIOVASC PROC W DRUG-ELUTING STENT W/O MCC	190	1.4%	2.31	\$136,605.89	64.09
189 - PULMONARY EDEMA & RESPIRATORY FAILURE	187	1.4%	10.15	\$78,839.74	66.87
190 - CHRONIC OBSTRUCTIVE PULMONARY DISEASE W MCC	175	1.3%	4.57	\$42,855.48	66.97
392 - ESOPHAGITIS GASTROENT & MISC DIGEST DISORDERS W/O MCC	169	1.3%	3.26	\$28,702.48	57.93
641 - NUTRITIONAL & MISC METABOLIC DISORDERS W/O MCC	158	1.2%	3.98	\$21,837.67	68.11
178 - RESPIRATORY INFECTIONS & INFLAMMATIONS W CC	153	1.1%	5.46	\$42,439.64	71.42
603 - CELLULITIS W/O MCC	149	1.1%	4.22	\$31,512.04	57.27
207 - RESPIRATORY SYSTEM DIAGNOSIS W VENTILATOR SUPPORT 96+ HOURS	139	1.0%	18.86	\$388,148.53	61.82
560 - AFTERCARE MUSCULOSKELETAL SYSTEM & CONNECTIVE TISSUE W CC	130	1.0%	15.77	\$67,329.51	74.48
208 - RESPIRATORY SYSTEM DIAGNOSIS W VENTILATOR SUPPORT <96 HOURS	130	1.0%	6.91	\$114,386.39	61.17
292 - HEART FAILURE & SHOCK W CC	129	1.0%	16.38	\$48,644.39	70.86
378 - G.I. HEMORRHAGE W CC	127	1.0%	2.89	\$38,558.67	70.76
638 - DIABETES W CC	115	0.9%	3.67	\$33,219.45	46.93
All Others	6,591	49.4%	6.27	\$78,556.73	61.38
ADD 14	13,355		6.27	\$77,601.77	61.08

2021 ANNUAL ADMINISTRATIVE CLAIMS DATA REPORT

Table 2.15 - Inpatient Hospital Discharges - Leading 25 MS DRGs

(Source: Kentucky Inpatient Discharge Claims)

HOSPITAL ADD: 15 Bluegrass

MS DRG	Discharges	% of Total	Avg LOS	Avg Charge	Avg Age
795 - NORMAL NEWBORN	5,843	5.0%	1.99	\$4,809.01	0.01
871 - SEPTICEMIA W/O MV 96+ HOURS W MCC	4,863	4.2%	7.49	\$68,829.01	64.54
807 - VAGINAL DELIVERY W/O STERILIZATION WO/CC/MCC	4,823	4.1%	2.44	\$14,855.32	27.59
177 - RESPIRATORY INFECTIONS & INFLAMMATIONS W MCC	4,424	3.8%	6.72	\$63,407.88	61.67
885 - PSYCHOSES	4,268	3.7%	5.95	\$16,805.81	27.56
794 - NEONATE W OTHER SIGNIFICANT PROBLEMS	2,424	2.1%	2.48	\$8,480.24	0.01
291 - HEART FAILURE & SHOCK W MCC	2,288	2.0%	5.71	\$44,825.44	71.30
897 - ALCOHOL/DRUG ABUSE OR DEPENDENCE W/O REHABILITATION THERAPY W/O MCC	2,097	1.8%	5.22	\$20,162.35	41.38
788 - CESAREAN SECTION WO/STERILIZATION WO/CC/MCC	1,896	1.6%	3.34	\$25,735.77	28.42
189 - PULMONARY EDEMA & RESPIRATORY FAILURE	1,420	1.2%	5.47	\$49,593.36	59.04
193 - SIMPLE PNEUMONIA & PLEURISY W MCC	1,208	1.0%	4.71	\$38,091.56	66.11
621 - O.R. PROCEDURES FOR OBESITY W/O CC/MCC	1,199	1.0%	1.19	\$56,481.47	41.53
872 - SEPTICEMIA W/O MV 96+ HOURS W/O MCC	1,196	1.0%	4.52	\$34,873.57	57.78
853 - INFECTIOUS & PARASITIC DISEASES W O.R. PROCEDURE W MCC	1,101	0.9%	16.44	\$188,984.33	59.75
806 - VAGINAL DELIVERY W/O STERILIZATION W/CC	1,084	0.9%	2.67	\$16,781.76	27.86
57 - DEGENERATIVE NERVOUS SYSTEM DISORDERS W/O MCC	1,034	0.9%	13.27	\$43,296.14	70.31
560 - AFTERCARE MUSCULOSKELETAL SYSTEM & CONNECTIVE TISSUE W CC	1,006	0.9%	13.26	\$35,931.41	68.97
65 - INTRACRANIAL HEMORRHAGE OR CEREBRAL INFARCTION W CC	1,001	0.9%	4.58	\$51,953.02	68.73
392 - ESOPHAGITIS GASTROENT & MISC DIGEST DISORDERS W/O MCC	900	0.8%	3.20	\$25,582.07	51.96
790 - EXTREME IMMATURETY OR RESPIRATORY DISTRESS SYNDROME NEONATE	894	0.8%	31.43	\$226,930.40	0.07
330 - MAJOR SMALL & LARGE BOWEL PROCEDURES W CC	799	0.7%	6.35	\$78,838.53	59.72
690 - KIDNEY & URINARY TRACT INFECTIONS W/O MCC	772	0.7%	4.29	\$26,255.28	65.38
247 - PERC CARDIOVASC PROC W DRUG-ELUTING STENT W/O MCC	772	0.7%	2.08	\$104,665.84	61.88
951 - OTHER FACTORS INFLUENCING HEALTH STATUS	761	0.7%	3.95	\$11,530.41	75.15
683 - RENAL FAILURE W CC	757	0.6%	4.15	\$30,216.95	65.44
All Others	68,062	58.2%	6.78	\$86,087.72	55.63
ADD 15	116,892		6.76	\$87,124.16	55.41

SECTION V

Inpatient Hospitalizations Summary of Categories by Quarter and Hospital A/D/D

2021 ANNUAL ADMINISTRATIVE CLAIMS DATA REPORT

Table 3.00 - Inpatient Hospitalization Days by Facility ADD and Payor

(Source: Kentucky Inpatient Discharge Claims)

Category	Group	Q1	Q2	Q3	Q4	Total
Statewide						
Total Patient Days		799,700	781,557	829,841	853,419	3,264,517
State of Residence	Kentucky	745,599	723,919	770,409	789,691	3,029,618
	Out of State	54,101	57,638	59,432	63,728	234,899
Gender	Female	407,179	407,124	428,359	438,451	1,681,113
	Male	392,514	374,402	401,444	414,940	1,583,300
	Unknown	7	31	38	28	104
Age Groups	0	50,015	54,556	60,687	58,544	223,802
	1 - 19	50,730	55,632	54,449	57,545	218,356
	20 - 64	360,377	353,081	383,426	385,331	1,482,215
	65 - 84	281,404	264,976	276,021	294,742	1,117,143
	85 - 99	56,713	52,874	54,822	56,772	221,181
	100+	461	438	436	485	1,820
Admission Type	Elective	164,364	166,617	164,354	174,422	669,757
	Emergency	403,890	377,512	433,193	455,983	1,670,578
	Information Not Available	82	176	223	646	1,127
	Newborn	42,193	44,866	49,532	47,735	184,326
	Trauma Center	8,659	7,374	5,253	4,420	25,706
	Urgent	180,512	185,012	177,286	170,213	713,023
Length of Stay (days)	0 - 5	245,119	255,136	257,125	249,808	1,007,188
	6 - 10	180,524	181,223	187,678	189,160	738,585
	11 - 30	255,763	237,010	267,925	271,929	1,032,627
	31 - 90	85,798	72,165	80,960	105,137	344,060
	91 - 180	13,625	15,966	15,112	17,326	62,029
	181+	18,871	20,057	21,041	20,059	80,028
Primary Payor	Commercial	166,153	172,130	191,215	192,811	722,309
	KY Medicaid	234,280	229,714	244,660	243,538	952,192
	Medicare	371,225	349,445	359,133	381,382	1,461,185
	Other	20,790	20,632	22,475	22,624	86,521
	Self-Pay & Charity	7,252	9,636	12,358	13,064	42,310

2021 ANNUAL ADMINISTRATIVE CLAIMS DATA REPORT

Table 3.01 - Inpatient Hospitalization Days by Facility ADD and Payor

(Source: Kentucky Inpatient Discharge Claims)

Category	Group	Q1	Q2	Q3	Q4	Total
ADD 01 - Purchase						
Total Patient Days		33,377	30,605	35,894	35,170	135,046
State of Residence	Kentucky	29,406	26,797	31,146	30,568	117,917
	Out of State	3,971	3,808	4,748	4,602	17,129
Gender	Female	16,967	15,562	18,594	19,017	70,140
	Male	16,410	15,043	17,300	16,153	64,906
Age Groups	0	2,077	1,731	2,452	1,857	8,117
	1 - 19	323	317	361	395	1,396
	20 - 64	13,275	12,457	15,129	14,168	55,029
	65 - 84	14,605	13,252	14,910	15,386	58,153
	85 - 99	3,073	2,833	3,008	3,330	12,244
	100+	24	15	34	34	107
Admission Type	Elective	7,107	6,738	7,184	6,754	27,783
	Emergency	19,770	17,935	22,720	22,267	82,692
	Newborn	1,922	1,587	2,201	1,733	7,443
	Urgent	4,578	4,345	3,789	4,416	17,128
Length of Stay (days)	0 - 5	14,291	14,706	15,217	14,688	58,902
	6 - 10	7,889	7,350	8,572	9,253	33,064
	11 - 30	9,295	7,646	10,480	9,035	36,456
	31 - 90	1,902	903	1,625	2,081	6,511
	91 - 180				113	113
Primary Payor	Commercial	6,138	5,408	7,715	6,689	25,950
	KY Medicaid	6,315	5,524	6,405	5,987	24,231
	Medicare	19,577	18,334	19,992	20,480	78,383
	Other	1,018	930	1,343	1,392	4,683
	Self-Pay & Charity	329	409	439	622	1,799

2021 ANNUAL ADMINISTRATIVE CLAIMS DATA REPORT

Table 3.02 - Inpatient Hospitalization Days by Facility ADD and Payor

(Source: Kentucky Inpatient Discharge Claims)

Category	Group	Q1	Q2	Q3	Q4	Total
ADD 02 - Pennyrile						
Total Patient Days		25,894	24,139	27,050	28,662	105,745
State of Residence	Kentucky	24,368	22,715	25,638	26,993	99,714
	Out of State	1,526	1,424	1,412	1,669	6,031
Gender	Female	14,022	13,283	14,134	15,003	56,442
	Male	11,872	10,856	12,915	13,659	49,302
	Unknown			1		1
Age Groups	0	851	1,152	1,143	886	4,032
	1 - 19	2,837	1,951	2,473	2,180	9,441
	20 - 64	10,117	9,308	10,929	11,226	41,580
	65 - 84	8,875	8,540	9,024	10,517	36,956
	85 - 99	3,168	3,180	3,415	3,739	13,502
	100+	46	8	66	114	234
Admission Type	Elective	6,967	7,546	7,479	8,882	30,874
	Emergency	10,471	8,813	11,426	12,265	42,975
	Information Not Available		17			17
	Newborn	851	1,152	1,139	874	4,016
	Urgent	7,605	6,611	7,006	6,641	27,863
Length of Stay (days)	0 - 5	6,658	6,634	6,943	6,855	27,090
	6 - 10	5,824	5,691	6,303	6,715	24,533
	11 - 30	10,194	9,811	11,274	11,674	42,953
	31 - 90	2,657	2,003	2,530	2,973	10,163
	91 - 180	561			445	1,006
Primary Payor	Commercial	2,547	2,311	3,298	3,413	11,569
	KY Medicaid	9,534	8,700	9,243	9,753	37,230
	Medicare	11,468	10,226	11,470	12,307	45,471
	Other	2,143	2,522	2,507	2,636	9,808
	Self-Pay & Charity	202	380	532	553	1,667

2021 ANNUAL ADMINISTRATIVE CLAIMS DATA REPORT

Table 3.03 - Inpatient Hospitalization Days by Facility ADD and Payor

(Source: Kentucky Inpatient Discharge Claims)

Category	Group	Q1	Q2	Q3	Q4	Total
ADD 03 - Green River						
Total Patient Days		27,506	27,189	28,597	28,567	111,859
State of Residence	Kentucky	26,341	26,096	27,422	27,262	107,121
	Out of State	1,165	1,093	1,175	1,305	4,738
Gender	Female	13,958	14,457	14,990	14,851	58,256
	Male	13,548	12,732	13,604	13,716	53,600
	Unknown			3		3
Age Groups	0	1,987	2,030	2,361	2,205	8,583
	1 - 19	2,506	3,726	2,678	1,877	10,787
	20 - 64	10,589	9,474	10,907	11,300	42,270
	65 - 84	10,026	9,573	10,181	10,623	40,403
	85 - 99	2,397	2,386	2,456	2,548	9,787
	100+	1		14	14	29
Admission Type	Elective	2,344	2,179	2,432	1,926	8,881
	Emergency	17,545	17,026	17,743	18,637	70,951
	Information Not Available	3	10	56		69
	Newborn	1,983	1,962	2,157	2,110	8,212
	Trauma Center	89	119	103	135	446
	Urgent	5,542	5,893	6,106	5,759	23,300
Length of Stay (days)	0 - 5	10,767	10,892	11,354	10,963	43,976
	6 - 10	6,577	6,607	7,122	7,196	27,502
	11 - 30	8,127	6,915	7,957	8,238	31,237
	31 - 90	1,789	1,707	1,527	1,617	6,640
	91 - 180	246	879	637	553	2,315
	181+		189			189
Primary Payor	Commercial	4,246	3,802	5,048	4,741	17,837
	KY Medicaid	7,857	9,085	8,133	7,282	32,357
	Medicare	14,402	13,482	14,442	15,184	57,510
	Other	741	623	684	997	3,045
	Self-Pay & Charity	260	197	290	363	1,110

2021 ANNUAL ADMINISTRATIVE CLAIMS DATA REPORT

Table 3.04 - Inpatient Hospitalization Days by Facility ADD and Payor

(Source: Kentucky Inpatient Discharge Claims)

Category	Group	Q1	Q2	Q3	Q4	Total
ADD 04 - Barren River						
Total Patient Days		53,109	50,811	52,137	52,561	208,618
State of Residence	Kentucky	52,215	49,571	51,284	51,336	204,406
	Out of State	894	1,240	853	1,225	4,212
Gender	Female	25,993	25,024	24,825	26,078	101,920
	Male	27,116	25,785	27,304	26,479	106,684
	Unknown		2	8	4	14
Age Groups	0	2,568	2,248	3,029	2,377	10,222
	1 - 19	7,492	8,280	8,211	7,639	31,622
	20 - 64	19,150	18,634	20,163	20,887	78,834
	65 - 84	19,529	17,855	16,759	18,192	72,335
	85 - 99	4,338	3,767	3,942	3,461	15,508
	100+	32	27	33	5	97
Admission Type	Elective	14,447	13,729	12,736	12,436	53,348
	Emergency	20,175	19,273	20,875	21,823	82,146
	Information Not Available		1			1
	Newborn	2,543	2,236	2,936	2,334	10,049
	Trauma Center		5			5
	Urgent	15,944	15,567	15,590	15,968	63,069
Length of Stay (days)	0 - 5	14,070	14,341	14,628	14,008	57,047
	6 - 10	11,483	10,553	11,356	11,444	44,836
	11 - 30	17,071	16,541	16,107	16,710	66,429
	31 - 90	6,598	5,543	5,862	7,656	25,659
	91 - 180	1,261	1,098	590	961	3,910
	181+	2,626	2,735	3,594	1,782	10,737
Primary Payor	Commercial	6,932	9,178	8,558	8,170	32,838
	KY Medicaid	16,817	14,087	17,825	15,985	64,714
	Medicare	28,086	25,150	23,737	25,823	102,796
	Other	833	969	1,156	1,050	4,008
	Self-Pay & Charity	441	1,427	861	1,533	4,262

2021 ANNUAL ADMINISTRATIVE CLAIMS DATA REPORT

Table 3.05 - Inpatient Hospitalization Days by Facility ADD and Payor

(Source: Kentucky Inpatient Discharge Claims)

Category	Group	Q1	Q2	Q3	Q4	Total
ADD 05 - Lincoln Trail						
Total Patient Days		30,529	26,168	31,427	31,788	119,912
State of Residence	Kentucky	29,510	25,129	29,962	30,327	114,928
	Out of State	1,019	1,039	1,465	1,461	4,984
Gender	Female	17,126	14,988	18,479	18,064	68,657
	Male	13,403	11,180	12,948	13,724	51,255
Age Groups	0	1,437	1,232	1,320	1,538	5,527
	1 - 19	3,251	3,115	3,924	4,279	14,569
	20 - 64	11,895	10,986	13,514	13,129	49,524
	65 - 84	10,844	8,509	10,352	10,295	40,000
	85 - 99	3,074	2,311	2,317	2,516	10,218
	100+	28	15		31	74
Admission Type	Elective	4,747	4,197	4,123	4,146	17,213
	Emergency	13,476	10,534	15,383	16,034	55,427
	Newborn	1,425	1,219	1,315	1,515	5,474
	Trauma Center				6	6
	Urgent	10,881	10,218	10,606	10,087	41,792
Length of Stay (days)	0 - 5	10,592	9,535	9,832	9,860	39,819
	6 - 10	7,889	6,647	8,191	8,090	30,817
	11 - 30	8,853	7,477	9,977	10,305	36,612
	31 - 90	939	701	1,042	1,492	4,174
	91 - 180	838	330	889	286	2,343
	181+	1,418	1,478	1,496	1,755	6,147
Primary Payor	Commercial	3,705	3,195	4,867	4,669	16,436
	KY Medicaid	8,294	7,250	9,027	9,164	33,735
	Medicare	16,276	13,206	14,802	15,297	59,581
	Other	1,818	2,040	2,285	2,168	8,311
	Self-Pay & Charity	436	477	446	490	1,849

2021 ANNUAL ADMINISTRATIVE CLAIMS DATA REPORT

Table 3.06 - Inpatient Hospitalization Days by Facility ADD and Payor

(Source: Kentucky Inpatient Discharge Claims)

Category	Group	Q1	Q2	Q3	Q4	Total
ADD 06 - KIPDA						
Total Patient Days		223,092	223,195	230,237	236,493	913,017
State of Residence	Kentucky	202,837	201,834	207,710	213,948	826,329
	Out of State	20,255	21,361	22,527	22,545	86,688
Gender	Female	111,741	113,505	115,138	118,900	459,284
	Male	111,347	109,690	115,099	117,588	453,724
	Unknown	4			5	9
Age Groups	0	18,155	20,631	21,542	23,525	83,853
	1 - 19	20,198	22,704	22,664	25,682	91,248
	20 - 64	106,612	106,500	110,305	110,359	433,776
	65 - 84	66,915	62,592	64,293	65,773	259,573
	85 - 99	11,130	10,699	11,340	11,080	44,249
	100+	82	69	93	74	318
Admission Type	Elective	40,839	39,378	38,761	41,346	160,324
	Emergency	109,899	105,809	123,202	124,141	463,051
	Information Not Available	29	89	52	250	420
	Newborn	13,801	16,073	15,783	17,018	62,675
	Trauma Center		4	4		8
	Urgent	58,524	61,842	52,435	53,738	226,539
Length of Stay (days)	0 - 5	66,337	69,951	70,075	67,664	274,027
	6 - 10	50,840	53,035	52,010	51,491	207,376
	11 - 30	71,728	67,426	73,406	72,878	285,438
	31 - 90	27,639	25,224	26,629	35,712	115,204
	91 - 180	4,253	5,506	5,755	6,996	22,510
	181+	2,295	2,053	2,362	1,752	8,462
Primary Payor	Commercial	75,748	81,855	86,337	86,781	330,721
	KY Medicaid	64,153	64,262	64,074	69,149	261,638
	Medicare	75,035	68,965	69,564	71,619	285,183
	Other	5,675	4,930	5,374	4,749	20,728
	Self-Pay & Charity	2,481	3,183	4,888	4,195	14,747

2021 ANNUAL ADMINISTRATIVE CLAIMS DATA REPORT

Table 3.07 - Inpatient Hospitalization Days by Facility ADD and Payor

(Source: Kentucky Inpatient Discharge Claims)

Category	Group	Q1	Q2	Q3	Q4	Total
ADD 07 - Northern KY						
Total Patient Days		74,640	72,957	74,991	80,080	302,668
State of Residence	Kentucky	69,445	66,916	68,931	74,065	279,357
	Out of State	5,195	6,041	6,060	6,015	23,311
Gender	Female	37,943	38,549	40,681	40,646	157,819
	Male	36,697	34,408	34,310	39,434	144,849
Age Groups	0	2,802	3,194	3,186	3,750	12,932
	1 - 19	3,252	3,839	3,251	3,663	14,005
	20 - 64	32,122	32,769	33,295	35,026	133,212
	65 - 84	29,353	26,966	28,844	30,679	115,842
	85 - 99	7,051	6,136	6,359	6,942	26,488
	100+	60	53	56	20	189
Admission Type	Elective	13,369	13,942	13,389	14,150	54,850
	Emergency	39,148	41,961	43,202	46,231	170,542
	Information Not Available	13	6			19
	Newborn	2,765	3,155	3,166	3,666	12,752
	Urgent	19,345	13,893	15,234	16,033	64,505
Length of Stay (days)	0 - 5	23,271	24,847	25,243	24,990	98,351
	6 - 10	19,196	19,843	18,951	19,639	77,629
	11 - 30	24,401	22,322	25,035	26,050	97,808
	31 - 90	6,990	5,722	5,386	8,731	26,829
	91 - 180	782	223	376	466	1,847
	180+				204	204
Primary Payor	Commercial	12,956	13,647	13,391	14,798	54,792
	KY Medicaid	18,218	19,106	19,052	19,875	76,251
	Medicare	41,073	37,867	39,850	42,519	161,309
	Other	1,683	1,388	1,631	1,506	6,208
	Self-Pay & Charity	710	949	1,067	1,382	4,108

2021 ANNUAL ADMINISTRATIVE CLAIMS DATA REPORT

Table 3.08 - Inpatient Hospitalization Days by Facility ADD and Payor

(Source: Kentucky Inpatient Discharge Claims)

Category	Group	Q1	Q2	Q3	Q4	Total
ADD 08 - Buffalo Trace						
Total Patient Days		2,388	2,425	2,404	2,804	10,021
State of Residence	Kentucky	2,071	2,049	2,036	2,307	8,463
	Out of State	317	376	368	497	1,558
Gender	Female	1,353	1,392	1,518	1,585	5,848
	Male	1,034	1,033	886	1,219	4,172
	Unknown	1				1
Age Groups	0	171	203	226	205	805
	1 - 19	24	38	30	25	117
	20 - 64	775	822	954	1,057	3,608
	65 - 84	1,147	1,047	983	1,214	4,391
	85 - 99	271	311	211	303	1,096
	100+		4			4
Admission Type	Elective	747	769	754	871	3,141
	Emergency	1,300	1,301	1,265	1,586	5,452
	Newborn	169	197	226	203	795
	Urgent	172	158	159	144	633
Length of Stay (days)	0 - 5	1,401	1,529	1,470	1,433	5,833
	6 - 10	435	405	358	479	1,677
	11 - 30	438	413	501	625	1,977
	31 - 90	114	78	75	267	534
Primary Payor	Commercial	443	577	557	766	2,343
	KY Medicaid	470	508	498	445	1,921
	Medicare	1,407	1,249	1,246	1,480	5,382
	Other	51	38	45	28	162
	Self-Pay & Charity	17	53	58	85	213

2021 ANNUAL ADMINISTRATIVE CLAIMS DATA REPORT

Table 3.09 - Inpatient Hospitalization Days by Facility ADD and Payor

(Source: Kentucky Inpatient Discharge Claims)

Category	Group	Q1	Q2	Q3	Q4	Total
ADD 09 - Gateway						
Total Patient Days		8,393	7,622	9,065	9,806	34,886
State of Residence	Kentucky	8,299	7,530	9,004	9,738	34,571
	Out of State	94	92	61	68	315
Gender	Female	4,706	4,564	5,236	5,318	19,824
	Male	3,687	3,058	3,829	4,488	15,062
Age Groups	0	292	225	295	238	1,050
	1 - 19	112	77	121	119	429
	20 - 64	3,578	3,641	4,189	4,558	15,966
	65 - 84	3,497	2,928	3,570	4,070	14,065
	85 - 99	909	751	888	821	3,369
	100+	5		2		7
Admission Type	Elective	1,695	1,714	1,705	1,407	6,521
	Emergency	6,358	5,635	7,021	8,122	27,136
	Newborn	285	220	290	232	1,027
	Urgent	55	53	49	45	202
Length of Stay (days)	0 - 5	3,589	3,539	3,601	3,408	14,137
	6 - 10	2,397	2,019	2,519	2,443	9,378
	11 - 30	2,185	1,853	2,435	3,093	9,566
	31 - 90	222	211	417	862	1,712
	91 - 180			93		93
Primary Payor	Commercial	1,035	983	1,091	1,735	4,844
	KY Medicaid	2,212	1,966	2,431	2,119	8,728
	Medicare	4,916	4,523	5,253	5,731	20,423
	Other	17	24	50	75	166
	Self-Pay & Charity	213	126	240	146	725

2021 ANNUAL ADMINISTRATIVE CLAIMS DATA REPORT

Table 3.10 - Inpatient Hospitalization Days by Facility ADD and Payor

(Source: Kentucky Inpatient Discharge Claims)

Category	Group	Q1	Q2	Q3	Q4	Total
ADD 10 - FIVCO						
Total Patient Days		22,927	22,096	24,578	25,874	95,475
State of Residence	Kentucky	17,224	16,488	18,040	19,040	70,792
	Out of State	5,703	5,608	6,538	6,834	24,683
Gender	Female	11,662	11,533	12,774	13,806	49,775
	Male	11,265	10,563	11,804	12,068	45,700
Age Groups	0	1,029	1,029	1,004	1,236	4,298
	1 - 19	206	204	167	222	799
	20 - 64	11,189	10,930	12,588	12,131	46,838
	65 - 84	8,965	8,342	9,365	10,583	37,255
	85 - 99	1,528	1,583	1,454	1,688	6,253
	100+	10	8		14	32
Admission Type	Elective	1,511	1,717	1,706	1,930	6,864
	Emergency	19,043	18,043	20,750	21,956	79,792
	Information Not Available	4	9	21	20	54
	Newborn	1,022	1,024	942	1,211	4,199
	Urgent	1,347	1,303	1,159	757	4,566
Length of Stay (days)	0 - 5	10,952	11,052	10,795	10,463	43,262
	6 - 10	6,406	6,442	7,324	7,656	27,828
	11 - 30	4,990	4,152	5,833	6,909	21,884
	31 - 90	579	450	626	846	2,501
Primary Payor	Commercial	3,484	3,119	3,791	3,861	14,255
	KY Medicaid	6,375	6,506	7,200	6,959	27,040
	Medicare	12,536	12,025	13,107	14,554	52,222
	Other	223	163	179	95	660
	Self-Pay & Charity	309	283	301	405	1,298

2021 ANNUAL ADMINISTRATIVE CLAIMS DATA REPORT

Table 3.11 - Inpatient Hospitalization Days by Facility ADD and Payor

(Source: Kentucky Inpatient Discharge Claims)

Category	Group	Q1	Q2	Q3	Q4	Total
ADD 11 - Big Sandy						
Total Patient Days		30,158	29,110	31,732	34,573	125,573
State of Residence	Kentucky	24,670	22,812	26,477	27,341	101,300
	Out of State	5,488	6,298	5,255	7,232	24,273
Gender	Female	15,731	15,602	15,994	18,601	65,928
	Male	14,427	13,508	15,738	15,972	59,645
Age Groups	0	1,233	1,187	1,510	1,465	5,395
	1 - 19	177	200	270	364	1,011
	20 - 64	13,807	13,747	14,234	15,691	57,479
	65 - 84	12,837	11,666	13,462	14,317	52,282
	85 - 99	2,098	2,310	2,236	2,703	9,347
	100+	6		20	33	59
Admission Type	Elective	4,632	5,019	4,592	5,082	19,325
	Emergency	18,495	15,930	21,705	22,712	78,842
	Newborn	1,101	1,038	1,395	1,234	4,768
	Trauma Center	13	18	12	26	69
	Urgent	5,917	7,105	4,028	5,519	22,569
Length of Stay (days)	0 - 5	9,634	10,079	9,419	9,494	38,626
	6 - 10	7,085	7,076	7,408	7,346	28,915
	11 - 30	10,072	9,013	11,234	12,411	42,730
	31 - 90	3,270	1,473	3,056	3,972	11,771
	91 - 180	97	782	412	408	1,699
	181+		687	203	942	1,832
Primary Payor	Commercial	3,909	3,833	4,391	4,116	16,249
	KY Medicaid	8,094	8,221	8,069	9,636	34,020
	Medicare	16,850	15,912	17,950	18,684	69,396
	Other	1,162	995	1,033	1,822	5,012
	Self-Pay & Charity	143	149	289	315	896

2021 ANNUAL ADMINISTRATIVE CLAIMS DATA REPORT

Table 3.12 - Inpatient Hospitalization Days by Facility ADD and Payor

(Source: Kentucky Inpatient Discharge Claims)

Category	Group	Q1	Q2	Q3	Q4	Total
ADD 12 - KY River						
Total Patient Days		23,692	20,946	22,347	21,632	88,617
State of Residence	Kentucky	23,269	20,645	22,085	21,109	87,108
	Out of State	423	301	262	523	1,509
Gender	Female	12,151	11,092	11,579	10,773	45,595
	Male	11,539	9,854	10,768	10,859	43,020
	Unknown	2				2
Age Groups	0	572	443	480	456	1,951
	1 - 19	121	252	182	171	726
	20 - 64	12,289	10,490	12,341	11,134	46,254
	65 - 84	9,036	8,603	8,208	8,384	34,231
	85 - 99	1,652	1,154	1,134	1,487	5,427
	100+	22	4	2		28
Admission Type	Elective	2,981	2,722	2,117	2,595	10,415
	Emergency	13,289	11,292	14,032	14,426	53,039
	Newborn	563	439	446	415	1,863
	Trauma Center				4	4
	Urgent	6,859	6,493	5,752	4,192	23,296
Length of Stay (days)	0 - 5	6,322	7,059	6,475	6,147	26,003
	6 - 10	5,331	5,171	5,410	5,242	21,154
	11 - 30	7,472	6,683	7,347	7,452	28,954
	31 - 90	2,427	1,412	2,408	2,417	8,664
	91 - 180	308	354	707	151	1,520
	181+	1,832	267		223	2,322
Primary Payor	Commercial	3,232	2,916	3,569	3,405	13,122
	KY Medicaid	6,884	6,287	7,479	6,749	27,399
	Medicare	12,668	10,918	10,307	10,317	44,210
	Other	881	805	906	1,078	3,670
	Self-Pay & Charity	27	20	86	83	216

2021 ANNUAL ADMINISTRATIVE CLAIMS DATA REPORT

Table 3.13 - Inpatient Hospitalization Days by Facility ADD and Payor

(Source: Kentucky Inpatient Discharge Claims)

Category	Group	Q1	Q2	Q3	Q4	Total
ADD 13 - Cumberland Valley						
Total Patient Days		51,962	50,100	51,872	55,020	208,954
State of Residence	Kentucky	48,369	45,819	48,823	50,482	193,493
	Out of State	3,593	4,281	3,049	4,538	15,461
Gender	Female	27,643	27,024	27,919	29,049	111,635
	Male	24,319	23,076	23,953	25,969	97,317
	Unknown				2	2
Age Groups	0	1,624	3,032	2,157	1,765	8,578
	1 - 19	2,272	2,259	2,434	2,113	9,078
	20 - 64	27,317	25,012	27,564	29,341	109,234
	65 - 84	18,128	17,382	17,192	19,319	72,021
	85 - 99	2,593	2,394	2,522	2,468	9,977
	100+	28	21	3	14	66
Admission Type	Elective	10,922	12,656	10,553	14,154	48,285
	Emergency	29,844	24,789	31,419	29,105	115,157
	Information Not Available	30	4			34
	Newborn	1,522	1,422	1,640	1,520	6,104
	Urgent	9,644	11,229	8,260	10,241	39,374
Length of Stay (days)	0 - 5	12,268	11,988	12,588	12,186	49,030
	6 - 10	7,830	7,669	8,792	8,064	32,355
	11 - 30	18,183	15,546	18,900	17,939	70,568
	31 - 90	3,905	3,278	3,565	5,080	15,828
	91 - 180	1,238	1,721	734	1,732	5,425
	181+	8,538	9,898	7,293	10,019	35,748
Primary Payor	Commercial	3,759	3,038	4,722	3,670	15,189
	KY Medicaid	22,214	20,081	21,475	21,907	85,677
	Medicare	25,142	26,094	24,487	28,033	103,756
	Other	647	691	860	1,024	3,222
	Self-Pay & Charity	200	196	328	386	1,110

2021 ANNUAL ADMINISTRATIVE CLAIMS DATA REPORT

Table 3.14 - Inpatient Hospitalization Days by Facility ADD and Payor

(Source: Kentucky Inpatient Discharge Claims)

Category	Group	Q1	Q2	Q3	Q4	Total
ADD 14 - Lake Cumberland						
Total Patient Days		18,979	18,650	21,600	21,270	80,499
State of Residence	Kentucky	18,516	18,253	21,096	20,711	78,576
	Out of State	463	397	504	559	1,923
Gender	Female	9,582	10,519	11,472	10,934	42,507
	Male	9,397	8,129	10,128	10,332	37,986
	Unknown		2		4	6
Age Groups	0	692	732	878	740	3,042
	1 - 19	139	164	170	137	610
	20 - 64	7,800	7,594	9,158	8,906	33,458
	65 - 84	8,470	8,015	8,838	9,493	34,816
	85 - 99	1,857	2,079	2,553	1,994	8,483
	100+	21	66	3		90
Admission Type	Elective	8,366	9,747	11,527	11,647	41,287
	Emergency	8,075	6,106	7,083	6,989	28,253
	Newborn	684	724	838	732	2,978
	Urgent	1,854	2,073	2,152	1,902	7,981
Length of Stay (days)	0 - 5	6,343	6,533	6,428	5,947	25,251
	6 - 10	3,869	4,237	4,005	3,751	15,862
	11 - 30	5,364	4,832	5,799	6,632	22,627
	31 - 90	2,438	1,306	1,989	2,401	8,134
	91 - 180	680	702	104	432	1,918
	181+	285	1,040	3,275	2,107	6,707
Primary Payor	Commercial	1,659	1,407	2,401	1,950	7,417
	KY Medicaid	4,852	5,440	6,803	4,883	21,978
	Medicare	12,020	11,218	11,620	13,582	48,440
	Other	346	505	550	656	2,057
	Self-Pay & Charity	102	80	226	199	607

2021 ANNUAL ADMINISTRATIVE CLAIMS DATA REPORT

Table 3.15 - Inpatient Hospitalization Days by Facility ADD and Payor

(Source: Kentucky Inpatient Discharge Claims)

Category	Group	Q1	Q2	Q3	Q4	Total
ADD 15 - Bluegrass						
Total Patient Days		173,054	175,544	185,910	189,119	723,627
State of Residence	Kentucky	169,059	171,265	180,755	184,464	705,543
	Out of State	3,995	4,279	5,155	4,655	18,084
Gender	Female	86,601	90,030	95,026	95,826	367,483
	Male	86,453	85,487	90,858	93,280	356,078
	Unknown		27	26	13	66
Age Groups	0	14,525	15,487	19,104	16,301	65,417
	1 - 19	7,820	8,506	7,513	8,679	32,518
	20 - 64	79,862	80,717	88,156	86,418	335,153
	65 - 84	59,177	59,706	60,040	65,897	244,820
	85 - 99	11,574	10,980	10,987	11,692	45,233
	100+	96	148	110	132	486
Admission Type	Elective	43,690	44,564	45,296	47,096	180,646
	Emergency	77,002	73,065	75,367	89,689	315,123
	Information Not Available	3	40	94	376	513
	Newborn	11,557	12,418	15,058	12,938	51,971
	Trauma Center	8,557	7,228	5,134	4,249	25,168
	Urgent	32,245	38,229	44,961	34,771	150,206
Length of Stay (days)	0 - 5	48,624	52,451	53,057	51,702	205,834
	6 - 10	37,473	38,478	39,357	40,351	155,659
	11 - 30	57,390	56,380	61,640	61,978	237,388
	31 - 90	24,329	22,154	24,223	29,030	99,736
	91 - 180	3,361	4,371	4,815	4,783	17,330
	181+	1,877	1,710	2,818	1,275	7,680
Primary Payor	Commercial	36,360	36,861	41,479	44,047	158,747
	KY Medicaid	51,991	52,691	56,946	53,645	215,273
	Medicare	79,769	80,276	81,306	85,772	327,123
	Other	3,552	4,009	3,872	3,348	14,781
	Self-Pay & Charity	1,382	1,707	2,307	2,307	7,703



CABINET FOR HEALTH AND FAMILY SERVICES
CHFS.KY.GOV