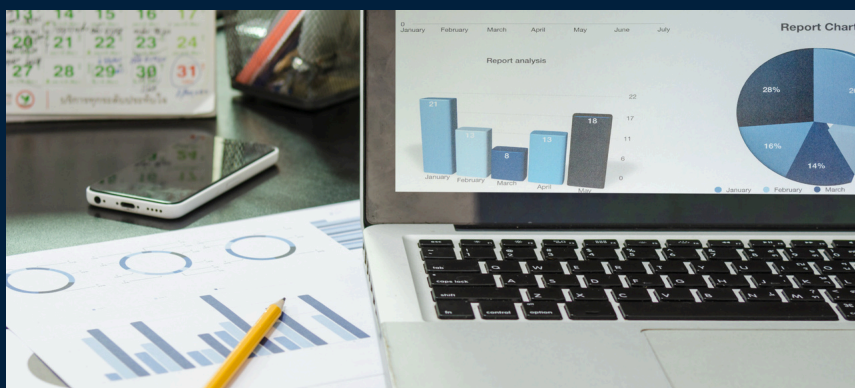


# PUBLIC HEALTH WORKFORCE DEVELOPMENT

Recruit. Train. Retain.



# Tuition Assistance Handbook



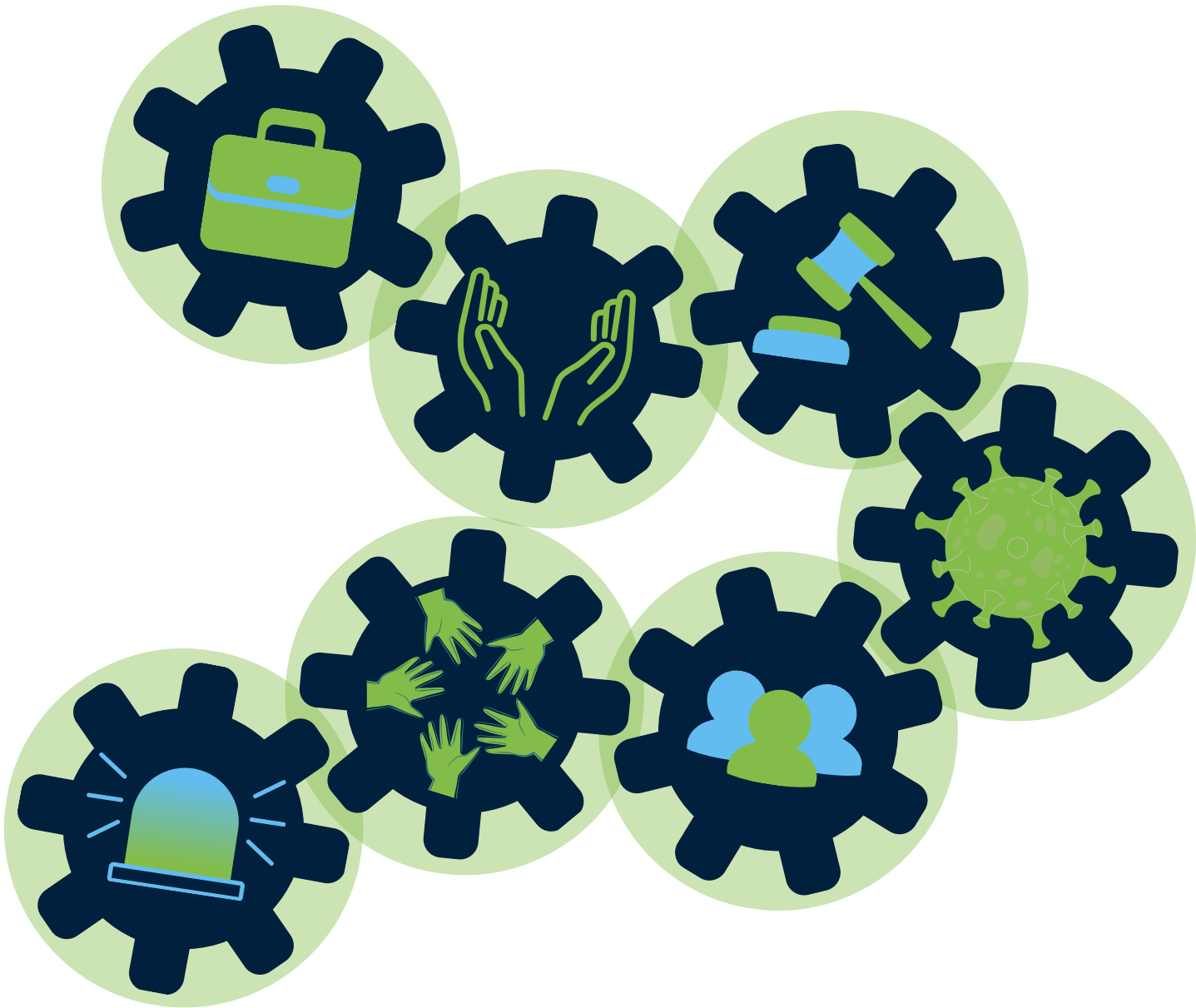
# Table of Contents

About the Tuition Assistance Program ..... 2

Tuition Assistance Overview ..... 3

University Partners and Opportunities ..... 4-5

Interested - Tuition Assistance Application ..... 6





# About the Tuition Assistance Program (TAP)



This handbook contains information about the Kentucky Department for Public Health's (KDPH) Tuition Assistance Program (TAP). This program supports public health employees' efforts to further their education in foundational public health areas by offering educational incentives through tuition assistance for credit-bearing courses. KDPH has collaborated with several universities to provide these opportunities for public health employees.

University fact sheets are linked within this handbook for more information about each of the partnering universities, including programs of study. However, employees are not limited to applying for only university degree courses and programs. Professional development courses are also available. Please visit [KDPH's Employee Learning and Development \(ELD\)](#) intranet site to learn more about upcoming professional development opportunities.

Funding for KDPH's TAP originated from the Centers for Disease Control (CDC) and Prevention's COVID-19 Crisis Response Cooperative Agreement (CoAG). The CoAG supports efforts to recruit, train and retain a response-ready public health workforce. Additional funding to sustain the TAP will be supported through CDC's Public Health Infrastructure Grant (PHIG) that supports workforce development initiatives.

## Tuition Assistance Overview



### Who is eligible?

- KDPH employees who are classified as full-time merit, federally funded time-limited, Go-Hire, unclassified employees and LHD Pass-Throughs, with approval.

### Tuition Assistance

- Employees may qualify for up to five courses during the academic year.
- Tuition assistance is subject to the availability of Department funds.
- If approved, recipients will complete the Proof of Enrollment form to verify course enrollment and cost.
- Coursework must have a direct relationship to the work of KDPH.
- Applicants are encouraged to pursue coursework that supports the field of public health.

**Interested?**

See page 6 for  
additional  
information

# University Partners and Opportunities

Click on the University name to learn more about the school and its educational offerings.

---



[EASTERN KENTUCKY UNIVERSITY](#)

---



BELLARMINE UNIVERSITY  
(COMING SOON)

---



[KENTUCKY STATE UNIVERSITY](#)

---



[MURRAY STATE UNIVERSITY](#)

---



[UNIVERSITY OF KENTUCKY](#)

---

Click on the University name to learn more about the school and its educational offerings.



UNIVERSITY OF LOUISVILLE



UNIVERSITY OF PIKEVILLE



WESTERN KENTUCKY  
UNIVERSITY

---

## Partners



# Interested?

Learn about the Tuition Assistance Program's **application** process:

## Step 1

Review this handbook to learn more about partner universities and educational offerings. Additional information can be found in KDPH's Tuition Assistance Program Policy. (Must be signed into VPN).

---

## Step 3

Next, fill out the Tuition Assistance Program application (summer)/application (fall). Endorsement is required at the division level or above to be considered to receive tuition assistance.

---

## Step 5

Employees accepted into the Tuition Assistance Program will be sent the necessary paperwork to complete before the semester begins.

## Step 2

Click on this LINK to view tuition assistance availability for college coursework.

---

## Step 4

A selection committee will review applications for acceptance into the program. Tuition assistance is subject to the availability of Department funds. More information or interviews may be requested of applicants.





# Questions? Reach out!

Karen Lencki  
Education Program Coordinator  
[karen.lencki@ky.gov](mailto:karen.lencki@ky.gov)

Deena Bell, MPA  
University Collaboration Coordinator  
[deena.bell@ky.gov](mailto:deena.bell@ky.gov)

[University Collaboration Website](#)



**Kentucky Public Health**  
Prevent. Promote. Protect.



Last Updated:  
2/13/25