

Nurse Executive Council Update

Ruth Willard, DNP, MBA, RN, BC

Director of Nursing

February 16, 2023



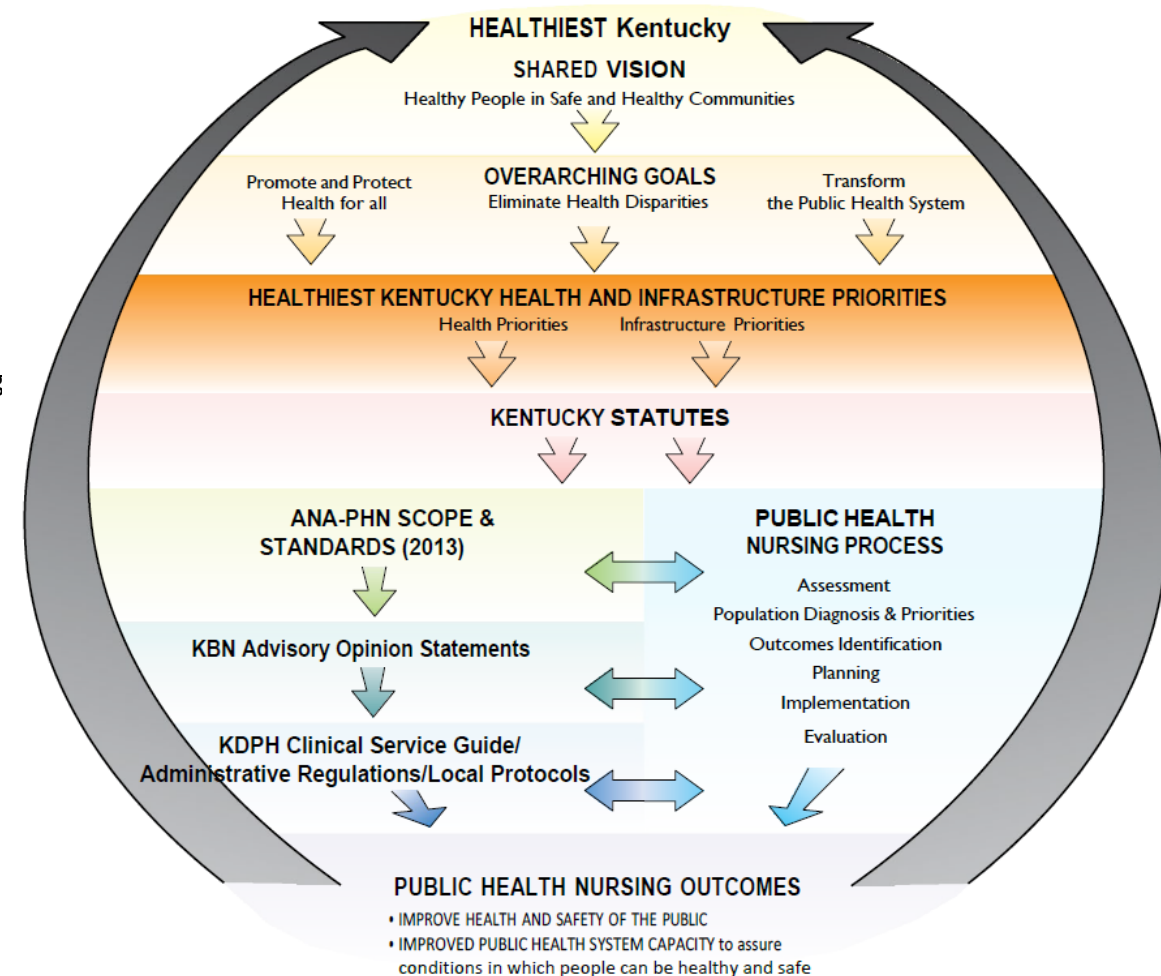
Kentucky Public Health
Prevent. Promote. Protect.

2022 NEC Review

➤ Nurse Executive Council

- 11 meetings (TEAMS)
 - April meeting canceled due to KPHA meeting
 - November meeting was electronic
- Increased membership to 15 nurses
 - 11 nurses from LHDs
 - 4 nurses from DPH programs
- Formalized formatting and completely rewrote the Clinical Service Guide document
 - 22 emergent protocol changes approved and uploaded (July to December)
 - All DPH programs (excluding Federal-WIC, HANDS, etc.) met with NEC for CSG change
 - Outstanding initiatives
 - Medical Records and Retention
 - Standardized annual trainings for LHD staff
 - OSHA Bloodborne Pathogens was updated and approved for CEs
 - Public Health Transformation
 - What to do when only parts of program are needed?
 - Example: Pregnancy testing/ECP but not all of Family Planning
- Created PHN Practice Model for Kentucky
 - Add to Administrative Reference (April 2023)
- Completed PHN Core Competency Workshop
 - Results disseminated across DPH/LHDs
 - Added to all TRAIN modules
 - Add to Administrative Reference (April 2023)

Kentucky's Public Health Nursing Practice Model



Nursing In Review

- **Kentucky Board of Nursing Continuing Education Administrator**
 - 124 modules reviewed in TRAIN
 - 553.6 total hours approved
 - STD Enhanced Role RN module
 - 27 LHD nurses completed didactic and practicum
 - Reviewed and certificates issued
 - KPHA Nurse Breakfast with WKU Dean of Nursing presentation
 - >50 nurses in attendance (46 registered for nursing CEs)
- **Kentucky Board of Social Work**
 - Continuing Education Administrator (*new affiliation*)
- **Public Health Nursing Webinar**
 - 5 GoToWebinars (live events)
 - 16 different presenters (excludes me, Dr. Stack and Dr. White)
 - 15 DPH programs represented
 - 1 outside program (Louisville Eating Disorders)
 - 432 participants
 - 14.3 nursing CEs offered via TRAIN registration
- **University of Kentucky College of Nursing**
 - Doctor of Nursing Program
 - Nurse Practicum Spring/Fall
 - Projects presented to NEC/Programs

