

RUBELLA

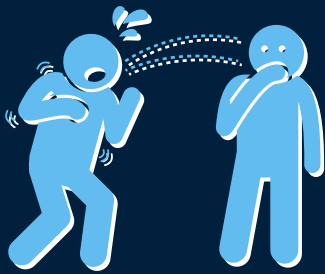
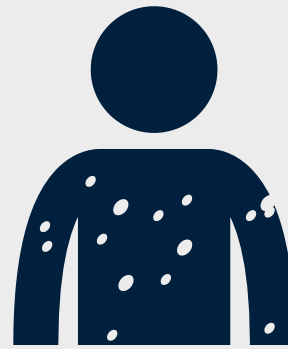
WHAT YOU NEED TO KNOW

Rubella (German measles) is a contagious viral infection.

If a woman gets rubella when pregnant serious consequences can result, including miscarriages, fetal deaths, still births and congenital rubella syndrome.

SYMPTOMS:

- Mild fever
- Headache
- Rash
- Muscle pain
- Tender lymph nodes
- Conjunctivitis



Spread in airborne droplets when people sneeze or cough.

**RUBELLA MOVES FAST
WE ARE COMMITTED TO MOVING FASTER!**

SCAN ME



(MMR) Two dose vaccine
1st dose: 12-15 months
2nd dose: 4-6 years



Kentucky residents can access a copy of their vaccination records utilizing the Kentucky Immunization Public Portal.

Scan the QR code or visit: chfs.ky.gov/KDPHMyVaxRecord

For more information visit: www.cdc.gov/rubella



Kentucky Public Health

Prevent. Promote. Protect.