



**A Strong**

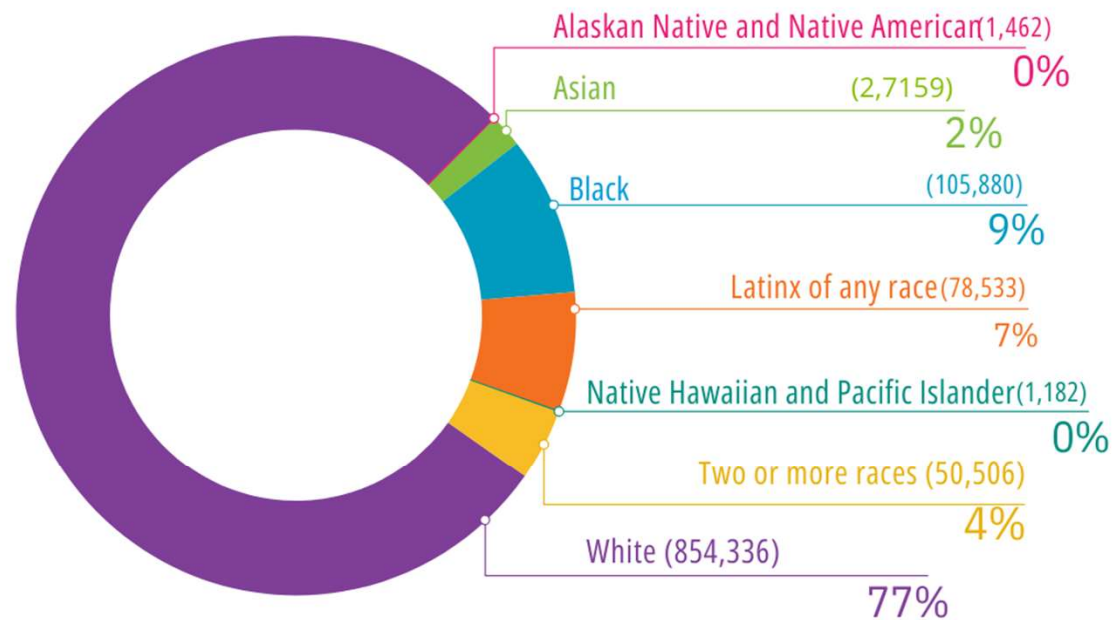
**"KID WORKFORCE"**

**makes a thriving KENTUCKY**



# Child Population Ages 0-19 by Race/Ethnicity

## Child population ages 0-19 by race/ethnicity: 2022



**NOTE:** Race and ethnicity categories are mutually exclusive.

**SOURCE:** U.S. Census Bureau, 2022 Population Estimates.



# ECONOMIC SECURITY

## ECONOMIC SECURITY



	BASELINE DATA	LATEST DATA	CHANGE SINCE BASELINE*
<b>CHILDREN IN POVERTY</b> (below 100% of the federal poverty level) NUMBER OF CHILDREN: 211,000	<b>24.4%</b> 2016	<b>21.2%</b> 2021	✓
<b>CHILDREN IN LOW-INCOME FAMILIES</b> (below 200% of the federal poverty level) NUMBER OF CHILDREN: 433,000	<b>48%</b> 2012-16	<b>43%</b> 2017-21	✓
<b>CHILDREN LIVING IN FOOD INSECURE HOUSEHOLDS</b> NUMBER OF CHILDREN: 154,300	<b>17.9%</b> 2019	<b>15.2%</b> 2021	✓
<b>HIGH RENTAL COST BURDEN</b> NUMBER OF HOUSEHOLDS: 218,000	<b>47%</b> 2012-16	<b>44%</b> 2017-21	✓

U.S. Census Bureau, 5-Year American Community Survey Estimates, Table DP04.

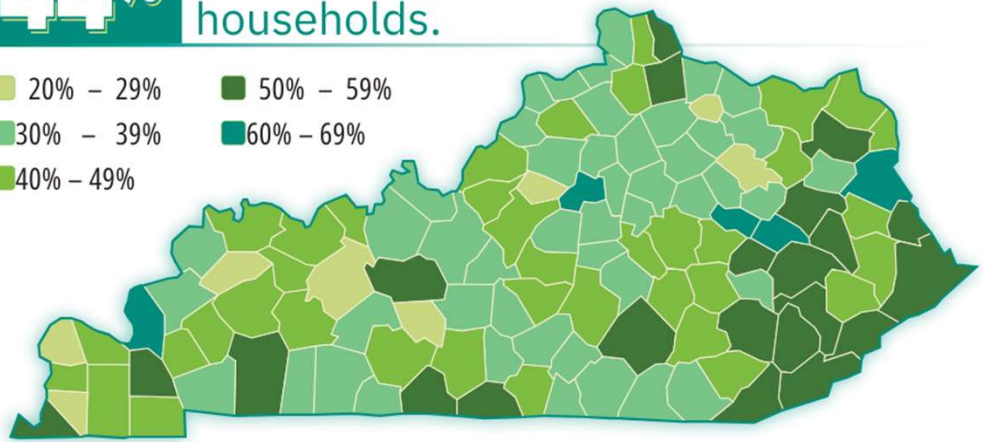
U.S. Census Bureau, 5-Year American Community Survey Estimates, Table DP04.



# ECONOMIC SECURITY

**44%** of Kentucky renters live in cost-burdened households.

- 20% - 29%
- 30% - 39%
- 40% - 49%
- 50% - 59%
- 60% - 69%

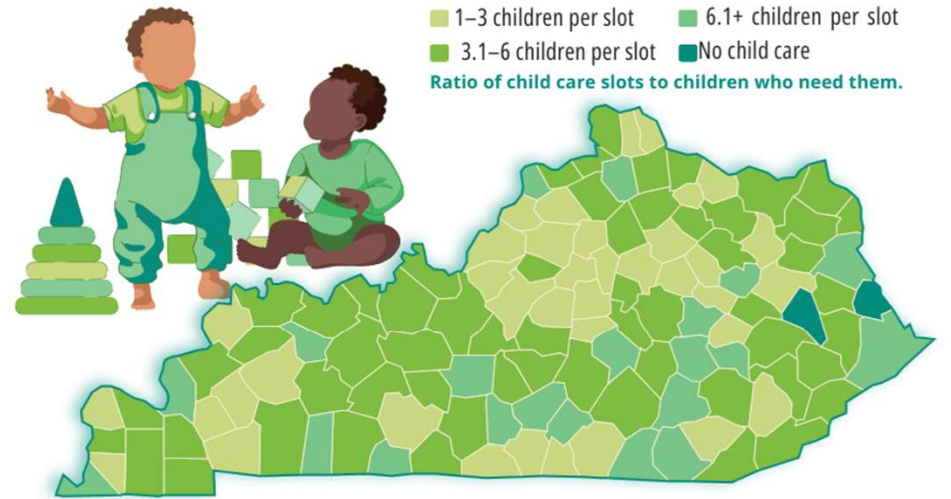


SOURCE: U.S. Census Bureau, 5-Year American Community Survey Estimates, Table DP04.

**SOLUTION:** Invest in affordable housing by infusing state dollars into the affordable and rural housing trust funds.

**79** of Kentucky's 120 counties are a child care desert.

- 1-3 children per slot
  - 3.1-6 children per slot
  - 6.1+ children per slot
  - No child care
- Ratio of child care slots to children who need them.



**SOLUTION:** Sustain the increase in affordability and wages made possible with federal relief funding by dedicating state funding to child care providers.

SOURCE: Department of Community Based Services, Division of Child Care





# EDUCATION

	BASELINE DATA	LATEST DATA	CHANGE SINCE BASELINE*	
EDUCATION	<b>KINDERGARTENERS READY TO LEARN</b> NUMBER OF CHILDREN: 23,173	<b>51.4%</b> SY 2017-18	<b>46%</b> SY 2022-23	
	<b>FOURTH GRADE STUDENTS PROFICIENT IN READING</b> NUMBER OF CHILDREN 23,610	<b>46%</b> SY 2021-22	<b>48%</b> SY 2022-23	
	<b>EIGHTH GRADE STUDENTS PROFICIENT IN MATH</b> NUMBER OF CHILDREN: 18,861	<b>36%</b> SY 2021-22	<b>36%</b> SY 2022-23	
	<b>HIGH SCHOOL STUDENTS GRADUATING ON TIME</b> NUMBER OF TEENS: 43,759	<b>90.3%</b> SY 2017-18	<b>91.4%</b> SY 2022-23	



# EDUCATION

For every Kentucky kid enrolled in an afterschool program, four are waiting to get in.



**SOURCE:** Afterschool Alliance, Kentucky After 3 PM, 2020

For every \$1 invested in out of school time care, states have seen savings of at least \$3 annually.



Investments in afterschool care would give parents peace of mind while at work, address pandemic learning loss, and save Kentucky money in the long run.

**SOURCE:** Afterschool Alliance, 2020.

**SOLUTION:** Sustain the increase in affordability and wages made possible by federal relief funding by dedicating state funding to all child care providers, including afterschool programs



# HEALTH



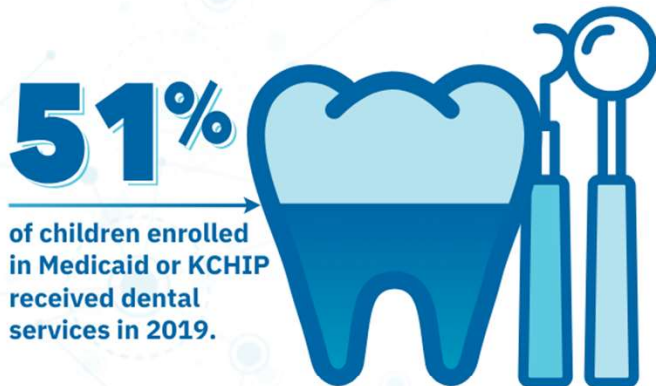
	BASELINE DATA	LATEST DATA	CHANGE SINCE BASELINE*
<b>SMOKING DURING PREGNANCY</b>			
NUMBER OF BIRTHS: 22,217	<b>18.1%</b> 2014-16	<b>14.2%</b> 2019-21	
<b>LOW-BIRTHWEIGHT BABIES</b>			
NUMBER OF BABIES: 13,801	<b>8.8%</b> 2014-16	<b>8.8%</b> 2019-21	
<b>CHILDREN UNDER 19 WITH HEALTH INSURANCE</b>			
NUMBER OF CHILDREN: 1,009,000	<b>96.7%</b> 2016	<b>96.1%</b> 2021	
<b>TEEN BIRTHS</b> (rate per 1,000 females ages 15- 19) NUMBER OF BIRTHS: 9,640	<b>31.7</b> 2014-16	<b>22.8</b> 2019-21	





# HEALTH

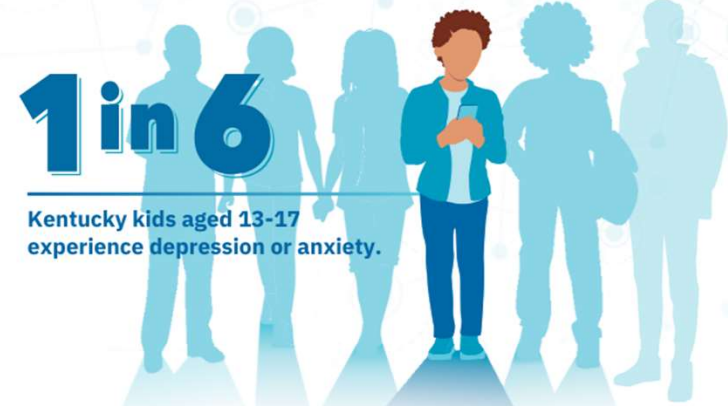
## Oral Health



SOURCE: Kentucky Cabinet for Health and Family Services, Department for Medicaid Services.

**SOLUTION:** Increase the reimbursement rates for dental services to expand the Medicaid network for dental care.

## Mental Health



SOURCE: 2021 KIP survey, analysis provided by Reach Evaluation. Note: The state's largest school district did not participate in the survey.

**SOLUTION:** Increase the reimbursement rates for mental health services to expand the Medicaid network for mental health care.



# FAMILY & COMMUNITIES

## FAMILY & COMMUNITY



	BASELINE DATA	LATEST DATA	CHANGE SINCE BASELINE*
<b>BIRTHS TO MOTHERS WITHOUT A HIGH SCHOOL DEGREE</b> NUMBER OF BIRTHS: 19,634	<b>14.3%</b> 2014-16	<b>12.7%</b> 2019-21	
<b>CHILDREN IN FOSTER CARE</b> (rate per 1,000 children ages 0-17) NUMBER OF CHILDREN: 50,947	<b>43.7</b> 2015-17	<b>50.1</b> 2020-22	
<b>CHILDREN EXITING FOSTER CARE TO REUNIFICATION</b> NUMBER OF CHILDREN: 5,628	<b>36%</b> 2015-17	<b>32%</b> 2020-22	
<b>YOUTH INCARCERATED IN THE JUVENILE JUSTICE SYSTEM</b> (rate per 1,000 youth ages 10-19) NUMBER OF YOUTH: 7,616	<b>20.5</b> 2015-17	<b>13.2</b> 2020-22	





# FAMILY & COMMUNITIES

**1 in 5**

youth who successfully completed their diversion program had subsequent involvement with the juvenile justice system within one year, compared to

**1 in 3**

youth who had their case referred to court.

**SOURCE:** Administrative Office of the Courts and Kentucky Department of Juvenile Justice, processed by Kentucky Youth Advocates



**QUESTIONS?**