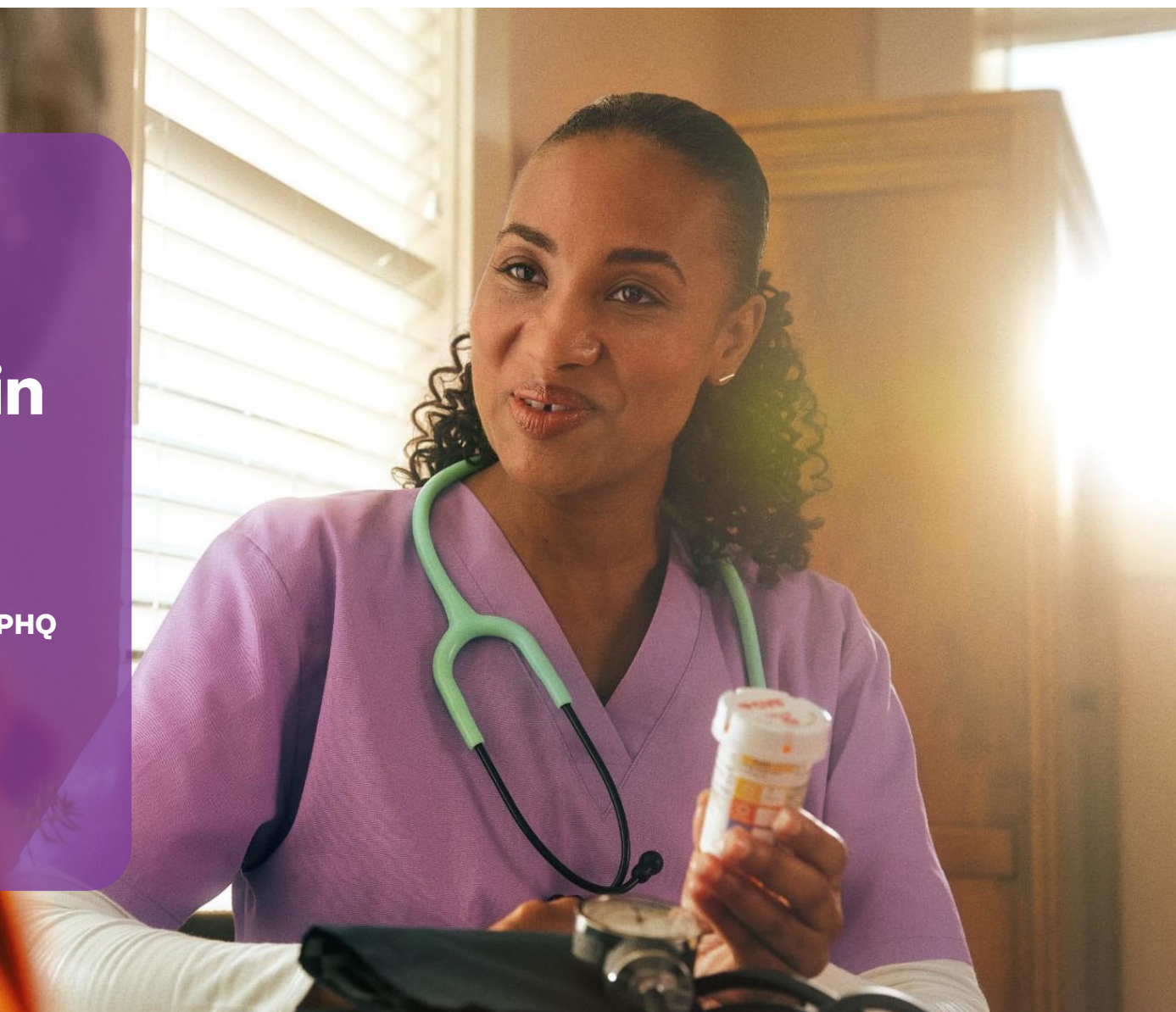


Preventive Care and Vaccinations in Adolescents

Megan Johnson, APRN, FNP-C, CPHQ
Health Services Officer

April 2025



Aetna policy statement

All Aetna presentation materials are confidential and proprietary and may not be copied, distributed, captured, printed or transmitted (in any form) without the written consent/authorization of [Aetna, Inc.].

MY 2023 HEDIS Rates

Weight Assessment and Counseling for Nutrition and Physical Activity for Children and Adolescents (WCC)

Submeasure	MY 2023 ABHKY Rate
BMI Percentile (12-17)	91.19%
BMI Percentile (3-11)	91.67%
BMI Percentile (Total)	91.48%
Counseling for Nutrition (12-17)	69.81%
Counseling for Nutrition (3-11)	69.05%
Counseling for Nutrition (Total)	69.34%
Counseling for Physical Activity (12-17)	72.33%
Counseling for Physical Activity (3-11)	69.05%
Counseling for Physical Activity (Total)	70.32%

Well-Child Visits in the First 30 Months of Life (W30)

Submeasure	MY 2023 ABHKY Rate
Well child visits in the first 15 months	61.93%
Well child visits for ages 15-30 months	69.37%

Child and Adolescent Well-Care Visits (WCV)

Submeasure	MY 2023 ABHKY Rate
3 to 11 years old	55.15%
12 to 17 years old	48.03%
18 to 21 years old	22.91%
Total	47.23%

Immunizations for Adolescents (IMA)

Submeasure	MY 2023 ABHKY Rate
Meningococcal Immunizations	80.40%
Tdap Immunizations	83.97%
HPV Immunizations	28.26%
Combination 2 Immunizations	26.31%
Combination 1 Immunizations	79.93%

Childhood Immunization Status (CIS)

Submeasure	MY 2023 ABHKY Rate
DTaP Immunizations	71.50%
OPV/IPV Immunizations	86.39%
Measles, Mumps, and Rubella Immunizations	85.45%
H. Influenza Type B Immunizations	84.40%
Hepatitis B Immunizations	88.72%
Chicken Pox Immunization	85.54%
Pneumococcal Conjugate	72.51%
Hepatitis A Immunizations	86.28%
Rotavirus Immunizations	68.53%
Influenza Immunizations	25.50%
Combination 10 Immunizations	19.03%
Combination 7 Immunizations	56.50%
Combination 3 Immunizations	65.87%



Incentives and Outcomes

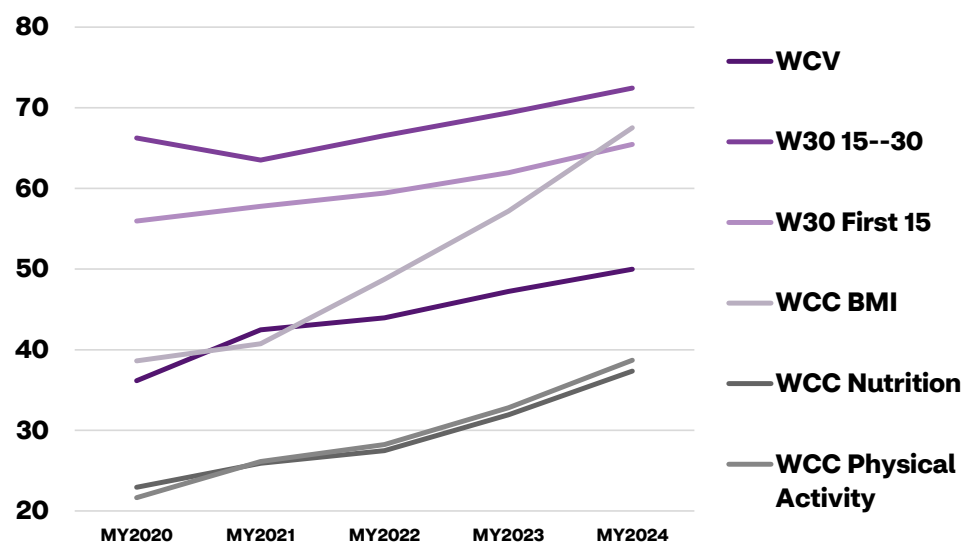
Aetna Better Cares Rewards

Member Incentive	Eligibility
\$25 for completion of annual well child visit	Members can receive a \$25 gift card for completion of an annual well child visit. Eligibility Criteria: Children ages 2-21 years. Limits & Restrictions: One gift card per year
\$50 for completion of six well child visits before age 15 months	Members can receive a \$50 gift card for completing six (6) well child visits in their first 15 months. Eligibility Criteria: Children ages 0- 15 Months Limits & Restrictions: Must complete all six well child visit within 15 months of birth date.
\$50 Gift card for participation in after school activities	Members can receive a \$50 gift card to pay for 4-H, Boys & Girls Clubs of America, Boy Scouts of America, Girl Scouts of the United States of America, Big Brother Big Sisters and other established community organizations, afterschool programs or organized team sport programs. Eligibility Criteria: <i>Members ages 6-18 who have completed a well child visit within the last 12 months</i> Limits & Restrictions: Limit to one per child per year. Must have record of well child visit. SKY Members are excluded.
\$25 for completion of HPV vaccine series before 13th birthday	Members can receive a \$25 gift card for completing the HPV vaccine series by their 13th birthday. For more information about childhood immunizations, visit: healthychildren.org Eligibility Criteria: Members 13 years old with HPV vaccine by their 13th birthday.
\$25 for completion of two infant flu shots	Members can receive a \$25 gift card for completing two Flu Vaccines by their second birthday. For more information about childhood immunizations, visit HealthyChildren.org Eligibility Criteria: Members 2 years old with 2 flu vaccines by their second birthday. Limits & Restrictions: The Nasal mist flu vaccine is not indicated for use in children under age two years. Incentive restricted to standard flu vaccine only.
\$25 for completion of Metabolic Screening	Members ages 1-17 can receive a \$25 gift card for completing metabolic screening if prescribed antipsychotic medications. Eligibility Criteria: Members ages 1-17. Limits & Restrictions: One gift card per year. Incentive is restricted to those with two or more antipsychotic prescriptions.
Over-the- Counter (OTC) Benefit	ABH-KY members will be eligible for a \$15 monthly stipend covering over-the-counter needs such as pain relievers, bandages, thermometers, and more.

For full menu of value-added benefits and reward – see link: <https://www.aetnabetterhealth.com/kentucky/whats-covered.html>

Well Child Visit Outcomes

**ABHKY Well Child Visit Rate Trend Improvement
MY2020 - Preliminary MY2024**

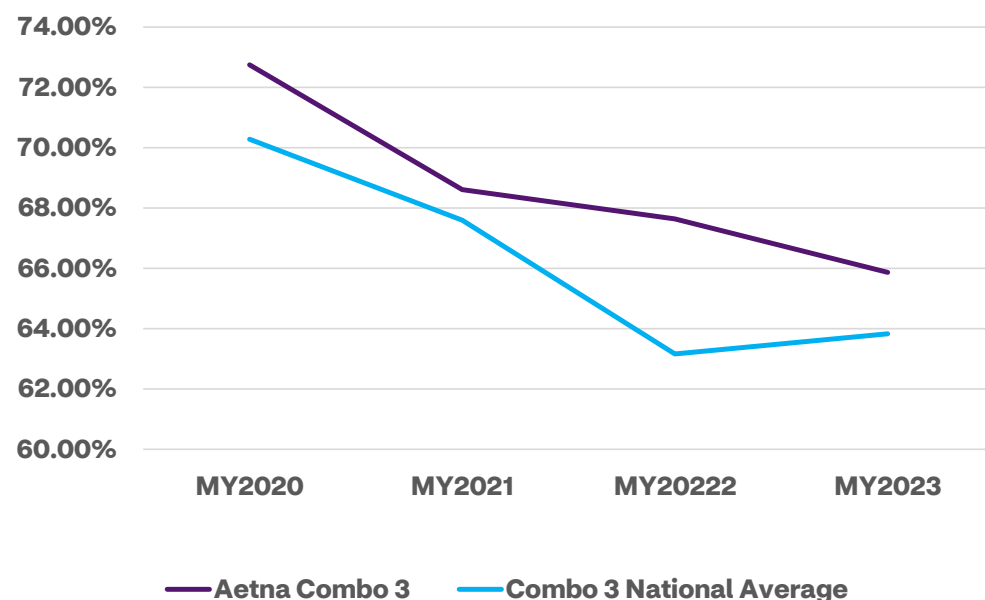


**ABHKY Percentage Point Improvement of Well Child
Visit Rates Over Past 4 Measurement Years**

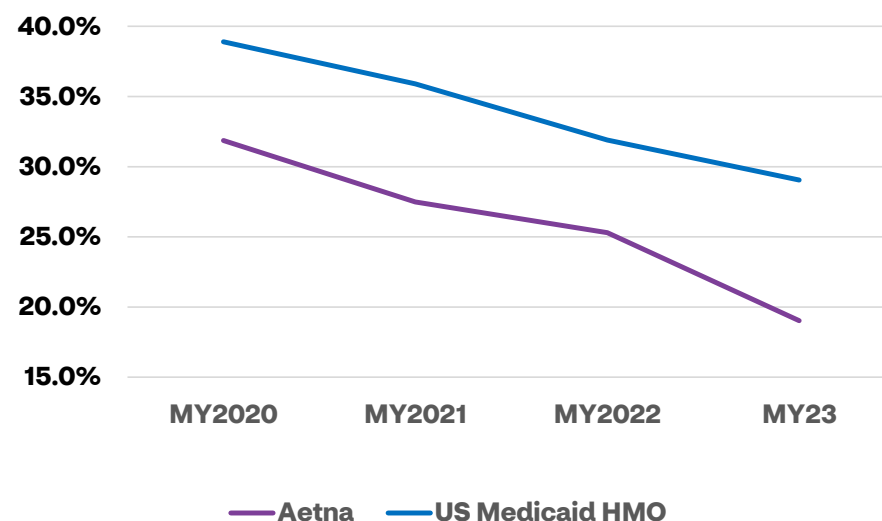
WCV	+ 13.82 points
W30 15--30	+ 6.18 points
W30 First 15	+ 9.52 points
WCC BMI	+ 28.9 points
WCC Nutrition	+ 14.41 points
WCC Physical Activity	+ 17.06 points

Child and Adolescent Immunization Outcomes

Aetna vs. National Medicaid HMO Average Trend
Childhood Immunizations Combo 3 (Flu not required)



Kentucky MCO vs HMO Medicaid National Average Trend
Childhood Immunizations Combo 10 (Requires Flu)



9.85 % Point Decline over 4 years in the National Medicaid MCO Average for CIS 10 (MY2020-My2023)

6.45 % Point Decline over 4 measurement years in the National Medicaid MCO Average for CIS 3 (MY2020-My2023)



Thank you

