

2026

System of Care Academy

*Supporting Families,
Strengthening Communities*

June 3-12

Register Now

Explore sessions and access registration links inside



Virtual and FREE



CART
(Communication
Access Realtime
Translation)
or Closed Captioning



American Sign
Language
Interpreters

13 sessions

24 CEs

Continuing
Education credits
**Pending board
approvals*

Questions? Email Lea.Taylor@ky.gov

TEAM
KENTUCKY

CABINET FOR HEALTH
AND FAMILY SERVICES

Hosted by the Department for Behavioral Health, Developmental & Intellectual Disabilities

Building a stronger system of care – one session at a time.

Since its inception in 2014, the System of Care (SOC) Academy has served as a premier training event dedicated to strengthening Kentucky's system of care for children, transition-age youth (16-25), and their families.

The SOC Academy is an opportunity to learn new strategies, deepen your knowledge, and get inspired. Each session equips participants with practical tools, strategies and ideas they can use right away.



Participants

The SOC Academy brings together a broad, multidisciplinary group of participants — including advocates, clinicians, case managers, prevention specialists, peer support specialists, educators, faith-based leaders, psychologists, psychiatrists, child care providers, law enforcement, families and youth with lived mental health and/or substance use experience, and partners across Family Resource and Youth Services Centers, juvenile justice, family and juvenile services, community-based services, corrections, child welfare, and public health, as well as interested community members, and more.



Full Continuum of Care

Sessions span the full continuum of care—from prevention through home- and community-based and recovery services and supports.



Accessible



American Sign Language Interpreters



CART (Communication Access Realtime Translation) or Closed Captioning

Please register at least 48 hours prior to the session



Continuing Education

24 Continuing Education (CE) credits* and training hours available

**Pending licensure board approvals*

More information is available on page 3

Certificate Eligibility Requirements:

To receive a certificate, attendees must register and use the same email address to enter each session and must attend at least 90% of the session.

Continuing education is approved for:

- Community Support Associates (CSA);
- Adult, Family, and Youth Peer Support Specialists (APSS, FPSS, and YPSS); and
- Targeted Case Managers (TCM).

Continuing Education is pending approval by the Kentucky Boards of: Alcohol & Drug Counselors, Examiners of Psychology, Licensed Professional Counselors, Pastoral Counselors, Professional Art Therapists, Psychology, and Social Work.

Foster Parent Training Hours are approved for only the following sessions:

- Restoring Balance: Tackling Disordered Eating in Kentucky
- From Sensory Needs to Support: Practical Tools for Regulation in Children and Adolescents
- Trauma (Mis)Informed Care
- Likes vs Life: Protecting Kids in the Social Media Jungle
- Isolation and Belonging: Finding Connection in a Disconnected World
- Building Bridges to Support Wellbeing for Youth, Families, and Communities

Session Evaluations and Certificates

Attendees who meet the 90% attendance requirement will receive an email within a few weeks with a link to the session evaluation(s). Completion of the evaluation(s) is required to access the certificate.

June 3

9:00-11:30 a.m. EST
2.5 CE's

Parents Against Vaping e-Cigarettes (PAVe) Core Presentation



Register for this June 3 session at tinyurl.com/SOCAJune3A

Train the Trainer (TOT)

Kentucky youth face a vaping epidemic with wide-ranging impacts on families and communities. This Training of Trainers will equip participants with Kentucky-specific instruction and tools to deliver Parents Against Vaping's (PAVe) educational presentation on youth vaping and nicotine use to trusted adults in their own communities.



- Offers practical skills for all participants, regardless of background
- Includes consultation with state Master/Super Trainers

Tara Rueckert

Nicotine Prevention Enhancement Specialist



June 4

10:00-11:30 a.m. EST
1.5 CEs

Supporting Transition-Age Youth in Recovery

The Role of Recovery Community Centers (RCCs)

Peer-led community hubs where recovery happens



David Brumett
Recovery Implementation Specialist

Kentucky Overdose Response Effort (KORE)

RCCs are vibrant, peer-led spaces where recovery comes to life. Learn how RCCs engage transition-age youth (18-25) in recovery support services.

Hear directly from RCC leaders and Young People in Recovery as they share real-world experiences, innovative strategies, and what truly resonates with young people.

Walk away with practical ideas you can use to better engage and support youth in recovery in your own community.

Don't miss this panel!

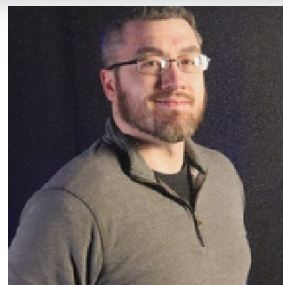


Aaron Guldenschuh-Gatten

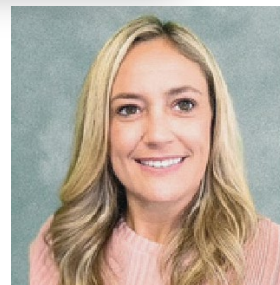
Executive Director
Recovery Cafe Lexington



Billy O'Bryan
Program Director
Young People in Recovery



Nathan Brockett
Site Administrator
Turning Point Recovery Community Center



Jessica Miller
Director
PIER Recovery Community



Lindsay West-Curci
Executive Director
Louisville Recovery Community Connection



Register for this June 4 morning session at tinyurl.com/SOCAJune4A

June 4

1:00-2:30 p.m. EST
1.5 CEs

Reclaim Your Personal Energy!

*Real-Time Resilience to Reset + Restore
Your Energetic Boundaries*



As community mental health peers/professionals, we will normalize and address the real human challenges to practicing self-care in the moment, leading with full presence, slowing-down without collapsing and feeling a need to GO-GO-GO!

This session delivers practical nervous system resets and energetic boundary tools to reduce daily stress-load, clear client residue and restore whole self-presence to sustainably support burnout resilience.

**Jen Schneeman, MBA, ERYT-500
C-IAYT, CDCA, CMHC, NBC-HWC**
Founder and Chief Energy Officer
Real Human Performance

Register for this June 4
afternoon session at
tinyurl.com/SOCAJune4B

June 5

10:00 a.m. - 12:00 p.m. EST
2.0 CEs

Approved for Foster Parent Training Hours

Restoring Balance

Tackling Disordered Eating in Kentucky

Register for this June 5
session at
tinyurl.com/SOCAJune5

Kate Overberg Wagoner, LCSW
*Youth Co-occurring Treatment
Program Administrator*
Staff, Kentucky Eating Disorder Council



Did you know that, on average, one person dies every 52 minutes as a result of an eating disorder — and that it can be prevented?

Messages from the diet and beauty industry can shape how we see ourselves, while mixed messages around food can disrupt our relationship with eating. Factors such as food access, food-related trauma, and cultural trauma also impact healthy relationships with food.

This session will explore how these influences impact individuals and families and will offer practical tools, strategies, and resources to help recognize and interrupt disordered eating patterns before they develop into an eating disorder.

June 8

9:00 - 10:30 a.m. EST
1.5 CEs

Approved for Foster Parent Training Hours

From Sensory Needs to Support

Practical Tools for Regulation in Children and Adolescents



Register for this June 8 morning session at tinyurl.com/SOCAJune8A

Amy Smith

Executive Advisor, Department for Community Based Services

What if challenging behaviors are actually a form of communication—rooted in unmet sensory needs?

Explore neuro-affirming tools and strategies to support all eight senses, helping children and adolescents regulate, feel safe, and thrive. Learn how creating sensory-supportive environments can reduce anxiety and stress while promoting overall well-being and mental health. Gain insight directly from a self-advocate and parent as they shared lived experience and practical insights to strengthen communication, deepen engagement, and build meaningful connections.

June 8

1:00-2:30 p.m. EST
1.5 CEs

From Mobility to Momentum

Strategies to Support Transient Students and Improve Attendance

Student mobility can quietly disrupt academic continuity, credit accumulation, and long-term success. Explore the academic and social-emotional impacts of frequent transitions, with a focus on how mobility contributes to chronic absenteeism. Use the Transient Population Report in Infinite Campus (IC) to identify highly mobile students, create Early Warning watchlists, and monitor key trends in attendance and credit progress, while considering how this data can inform cross-system collaboration.

Examine common barriers and design tiered, actionable strategies to strengthen connectedness, improve attendance, and support at-risk students across school, home, and community settings. Leave with practical tools and approaches that can be implemented immediately, regardless of role or background.



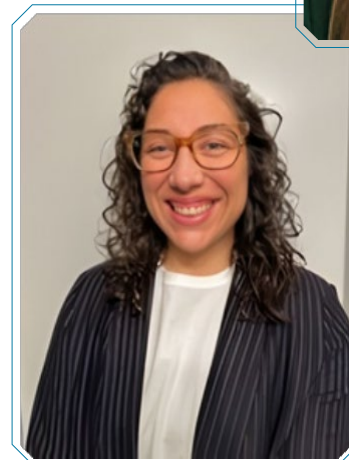
Register for this June 8 afternoon session at tinyurl.com/SOCAJune8B



Lisa Henry
and
Ashley Gates

Persistence to Graduation Program Consultants

Kentucky Department of Education



June 9

9:00 - 11:00 a.m. EST
2.0 CE's

Approved for Foster Parent Training Hours

Trauma (Mis)Informed Care



There is a significant correlation between trauma and substance use. This has resulted in "Trauma-Informed Care" being implemented to varying degrees in a multitude of settings.

Unfortunately, what is called Trauma-Informed Care is often based on an incomplete or else inaccurate understanding of the fundamentals of what it means to be Trauma-Informed. Trauma-Misinformed Care is an exploration of the basics of what it means to be Trauma-Informed as well as common pitfalls and misunderstandings related thereto.

James Campbell
Associate Director
Southeast Addiction Technology Transfer Center



Register for this June 9 session at tinyurl.com/SOCAJune9

June 10



Register for this June 10 morning session at tinyurl.com/SOCAJune10A

9:00 a.m. - 12:00 p.m. EST
3.0 CE's

Support Over Silence

Support Over Silence for KIDS is a highly interactive program with six engaging modules for participants to build skills in a supportive learning environment where open conversation is encouraged.

More than a training, Support Over Silence is a universal, prevention-focused approach that promotes positive parenting, reduces caregiver stress, and fosters supportive community environments. By equipping

participants with practical tools and real-world strategies, the program helps prevent child maltreatment before it begins. This session is a call to action—empowering community members to confidently support caregivers and their children during challenging moments.

Support Over Silence promotes a new, judgment-free way of changing community culture, helping businesses, community groups, hospitals, schools, and neighbors create spaces where families are supported, even during the most challenging moment.

Dr. Jennifer Thornhill, DSW, MSSW, CSW
Tiffany Mullis, MSSW, MPA
Assistant Directors
Department for Community Based Services



Dr. Jennifer Thornhill **Tiffany Mullis**

June 10

Approved for Foster Parent Training Hours

1:00 - 2:30 p.m. EST
1.5 CEs

Like vs Life

Protecting Kids in the Social Media Jungle

Register for this June 10 afternoon session at tinyurl.com/SOCALune10B

John Sims
Detective
Kentucky State Police



In today’s fast-moving digital world, one post can have lasting consequences. This session encourages participants to pause, evaluate, and make thoughtful choices online—promoting strong privacy habits, open family conversations, and a “think before you post” mindset to better protect yourself and your children.

Gain a deeper understanding of current online risks, including how to recognize that not everyone online is who they seem. Detective Sims will highlight predator tactics, rising cybertip activity, and emerging concerns such as generative AI and popular apps like BeReal and Brookhaven.

Explore practical strategies to strengthen digital safety, including the “Pause...Question...Verify” approach, reducing digital footprints, and setting clear family expectations around social media use.

This session emphasizes the importance of ongoing, honest conversations between adults and youth, paired with proactive strategies and resources to help families confidently navigate today’s social media jungle.

June 11

Approved for Foster Parent Training Hours

9:00 - 11:00 a.m. EST
2.0 CEs

Isolation and Belonging

Finding Connection in a Disconnected World

The experience of loneliness and isolation is pervasive, and the physical and mental health impact of this is substantial and documented. Why is it that we struggle so much to find a sense of connection to others? Why does intimacy seem to be so elusive? This session will take an honest look at these issues, and offers practical solutions for building honest, authentic connections in our lives and helping those we serve to build them in their own.

Register for this June 11 morning session at tinyurl.com/SOCALune11A

James Campbell
Associate Director
Southeast Addiction Technology
Transfer Center



Through a Father's Eyes *Barriers to Engagement*



Tare Wilson



Billy Oliver



Gary McElroy



Timothy Shumaker

Fathers play an important—yet often underutilized—role in families. This facilitated discussion brings together the lived experiences of fathers with practical strategies for engaging them in services. Participants will hear directly from fathers about what helped and what didn't, and what made a difference in their involvement.

Explore common barriers and system-level challenges that limit father engagement and learn how meaningful father inclusion improves family outcomes across the continuum of care. This session will provide real-world, actionable strategies to increase involvement, strengthen engagement, and better support families through more intentional father inclusion. Come develop strategies to build trust and create more father-friendly environments within your organization.

Register for this June 11
afternoon session at
tinyurl.com/SOCAJune11B

June 12

9:00 - 10:30 a.m. EST
1.5CEs

Leadership as a Deliverable

How Culture Shapes Outcomes in Human Services

Explore how leadership shapes service delivery across human services by integrating 20 years of real-world experience with I-O Psychology principles. Consider how fostering psychological safety and healthy work cultures empowers staff, reduces complacency, and improves the quality of support provided to families and communities.

Evaluate the role of a human-centered change agent in transforming organizational complacency into a healthy, sustainable workplace culture that prioritizes advocacy and employee well-being. Apply evidence-based strategies to enhance employee well-being, retention, and service quality. Leave with a personalized plan and actionable tools to strengthen organizational impact and community-based support.



Register for this June 12 morning session at tinyurl.com/SOCAJune12A



Ashley Randall

Human Services Independent Consultant

June 12

1:00 - 2:30 p.m. EST
1.5 CEs

Approved for Foster Parent Training Hours



Christa Bell



Rashmi Adi-Brown



Kelli Root



James Wade

Building Bridges to Support Wellbeing for Youth, Families, and Communities



Register for this June 12 afternoon session at tinyurl.com/SOCAJune12B

The Building Bridges Initiative (BBI) supports youth in residential care, their families, and communities by bringing together providers, partners, advocates, family, and youth to break down barriers and plan a better future. Learn how BBI in Kentucky is driving efforts to improve outcomes for youth by centering quality clinical care, trauma-informed approaches, community engagement, and youth and family voice.